



morton.

Surry Hills 67/230 Elizabeth Street

 2  1

This high standard contemporary renovation offers an affordable entry into one of Sydney's most desirable suburbs. A separate storeroom/study on the same level is an added bonus. Light filled spacious rooms compliment high ceilings and a corner position offers rare cross ventilation. A perfect opportunity for both investors and occupiers.

- Freshly Painted
- Large separate storeroom/study on same level
- North and east aspect
- 2 good sized bedrooms, built-ins
- Exquisite bathroom, Laundry outlet
- Large open plan living
- Designer kitchen, omega appliances
- New flooring, air con
- Intercom and lift access
- Large storage room on same level

View

As advertised or by appointment

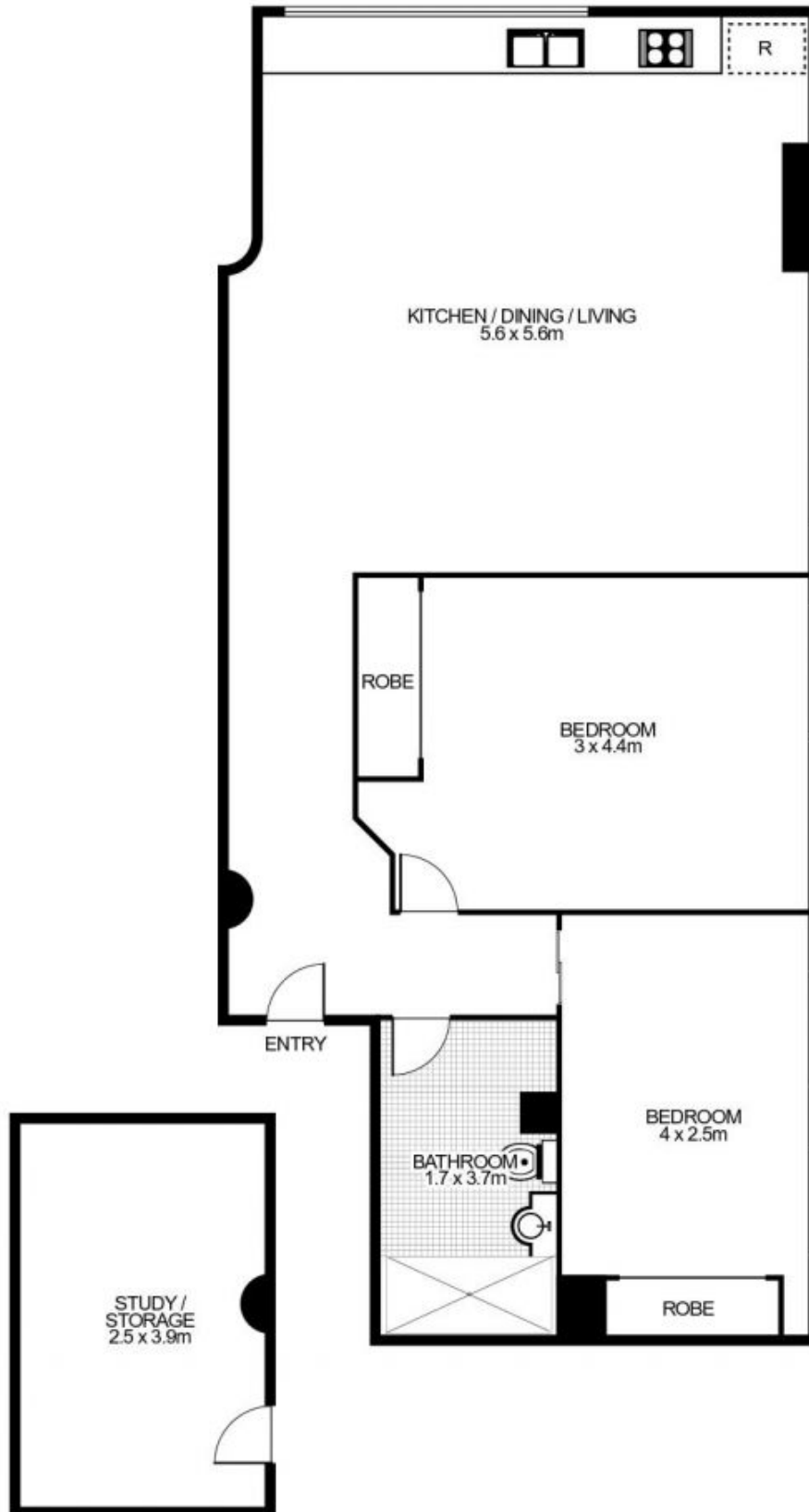
Agent

Sarah Fowell



 sarah@morton.com.au

morton.com.au



67/230 Elizabeth Street, SURRY HILLS



This floor plan is intended as a guide only. Layout dimensions are approximate only. No representations or warranties of any nature whatsoever are given or intended. Any person using this information should rely on their own enquiries. Floor Plans by SURROUNDPIX.