



morton.

Woolloomooloo 448/6 Cowper Wharf Roadway



This fantastic unfurnished studio apartment is located on the eastern side of the Wharf and enjoys views of Garden Island and Potts Point. With a highly functional floorplan that maximises space and makes the most of the stunning views, this apartment is a wonderful and relaxing haven.

- Kitchen with dishwasher and gas cooktop
- Reverse cycle air conditioning
- Built in storage
- On site 24 hour security
- Internal laundry
- Water Views

View

As advertised or by appointment

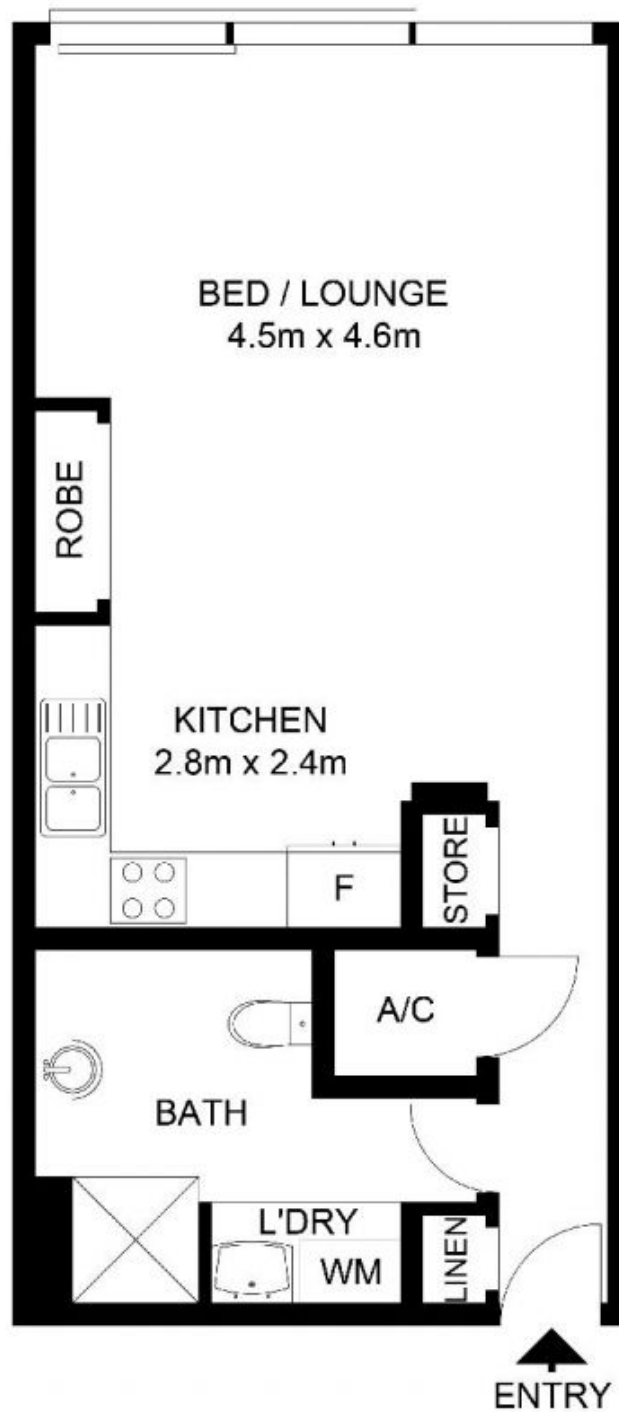
Agent

Sarah Fowell



✉ sarah@morton.com.au

morton.com.au



morton.

448/6 Cowper Wharf Road, WOOLLOOMOOLOO

Not to scale • All measurements are approximate • Drawn for marketing purposes only • Floorplan by © Industrie Media

