



morton.

Woolloomooloo 542A/6 Cowper Wharf Roadway

 2  2

With respect to the government's restrictions around open homes and to help stop the spread of COVID-19, our properties can be viewed by appointment only. Please contact the listing agent for more information.

This luxurious waterfront unfurnished apartment is located on the eastern side of Woolloomooloo's Finger Wharf. This property makes the most of the stunning views over Potts Point and Garden Island.

- Invitingly well proportioned combined lounge and dining
- Generous master has an ensuite, walk-in robe/dressing room
- Sleek kitchen with granite benches and gas appliances
- Vaulted ceilings, reverse cycle air conditioning
- Oversized second room on lower level, 2nd bathroom and internal laundry
- 24 hour on site security

View

As advertised or by appointment

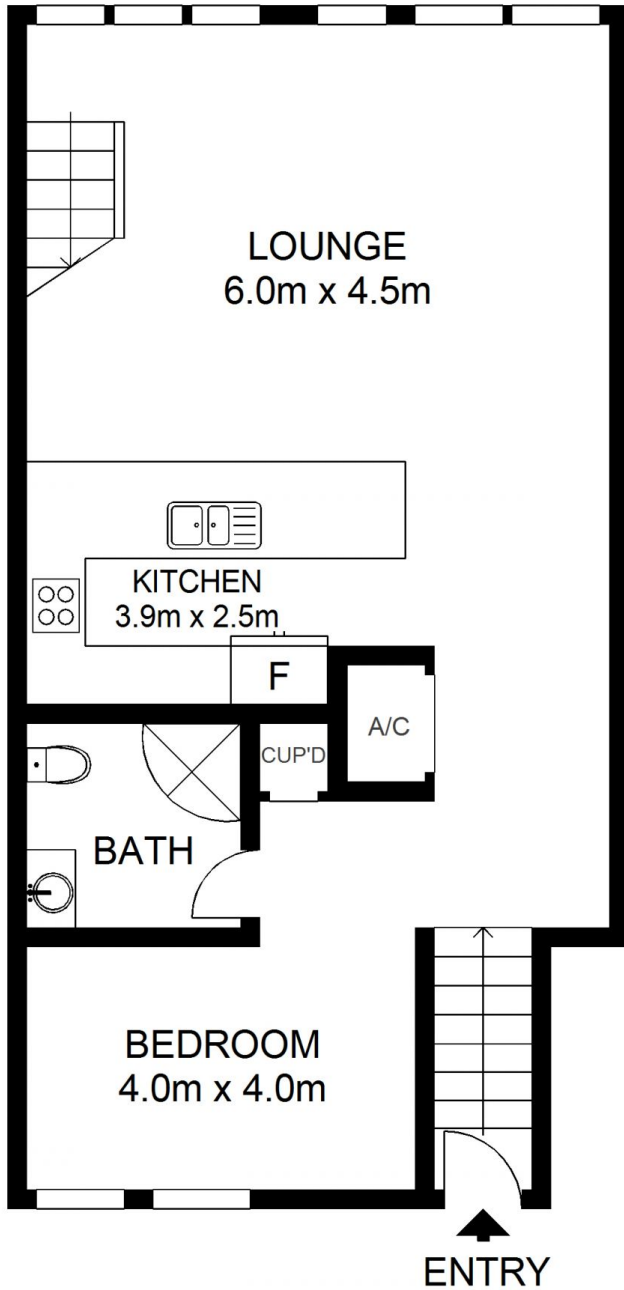
Agent

Sarah Fowell

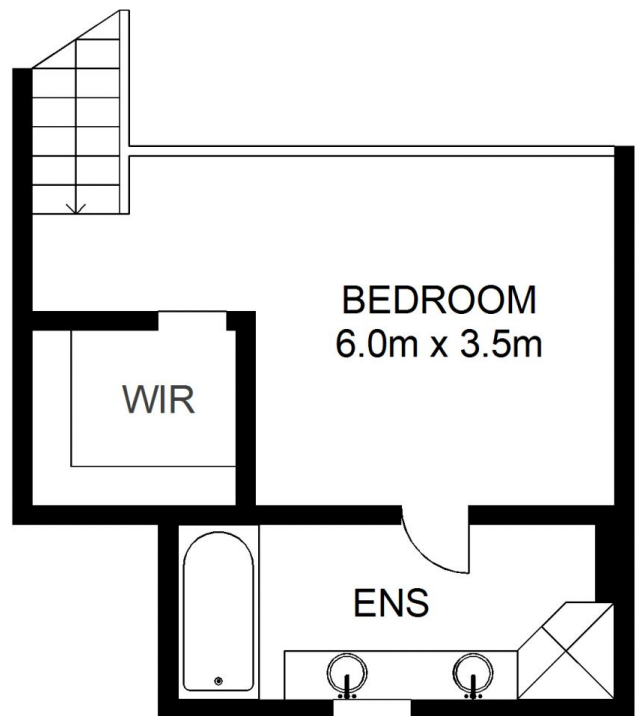


 sarah@morton.com.au

morton.com.au



ENTRY LEVEL



UPPER LEVEL

morton.

542A/6 Cowper Wharf Road, WOOLLOOMOOLOO

Not to scale • All measurements are approximate • Drawn for marketing purposes only • Floorplan by © Industrie Media

