



morton.

Woolloomooloo 323/6 Cowper Wharf Roadway

🛏 2 🚿 2 🚗 1

This two bedroom unfurnished apartment is positioned towards the end of the Wharf. Receiving the morning sunshine the apartment has plenty of natural light. Open plan living area boasting high ceiling's with exposed timber beams.

- Water views to Potts Point and Garden Island
- Large master bedroom with ensuite
- Second bedroom or can be a used as a study
- Reverse cycle air conditioning
- 24hr security and video intercom
- Secure car space is located at Lincoln Crescent

View

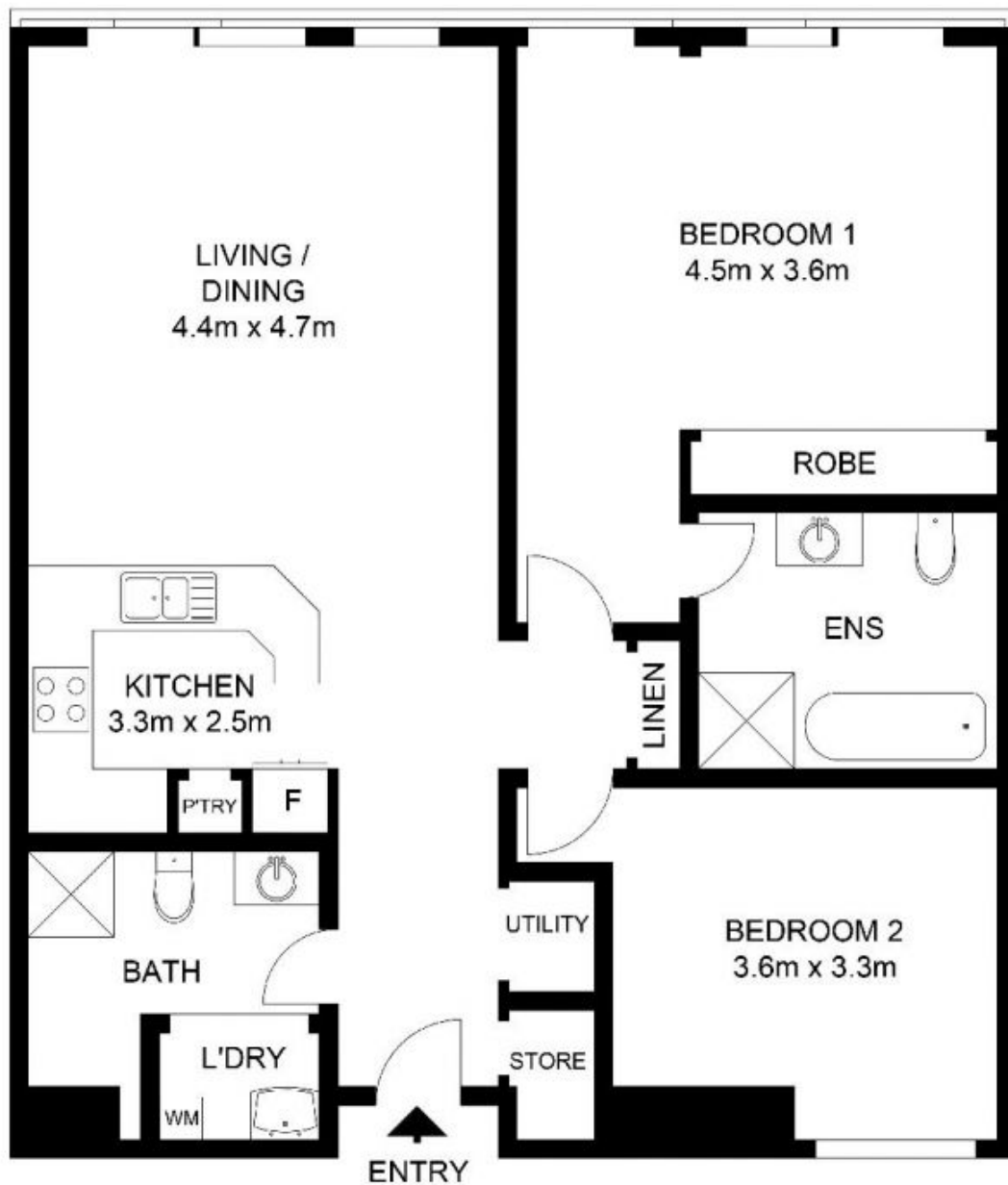
As advertised or by appointment

Agent

Morton

📞
✉ info@morton.com.au

morton.com.au



morton.

323/6 Cowper Wharf Roadway, WOOLLOOMOOLOO

Not to scale • All measurements are approximate • Drawn for marketing purposes only • Floorplan by © Industrie Media

