



# morton.

**Pyrmont** 60/1 Murray Street

🛏 2 🚿 2 🚗 1

Located across the road from the Pyrmont Bridge, on Darling Harbour's doorstep, this spacious two bedroom apartment is situated on the ground level boasting a huge private courtyard with garden beds and a north facing aspect into the common gardens, creating quiet and peaceful living.

- Huge private courtyard ideal for alfresco living and entertaining.
- Spacious open plan carpeted lounge and dining with floor to ceiling windows and ground level access.
- Leafy north facing courtyard.
- Gourmet gas kitchen with ample granite bench and storage space, breakfast area and smeg stainless steel integrated appliances.
- Carpeted King sized master bedroom with ensuite / separate bathtub, his and hers walk-in built-in mirrored robes and access to the courtyard.
- Spacious second bedroom with mirrored built-ins, with access to the courtyard.
- Ducted air conditioning throughout with dual zone control

### View

As advertised or by appointment

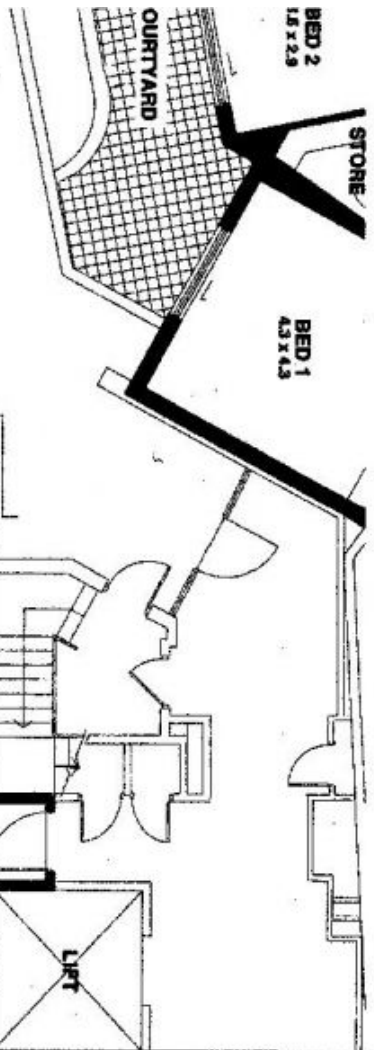
### Agent

**Patricia Carter**

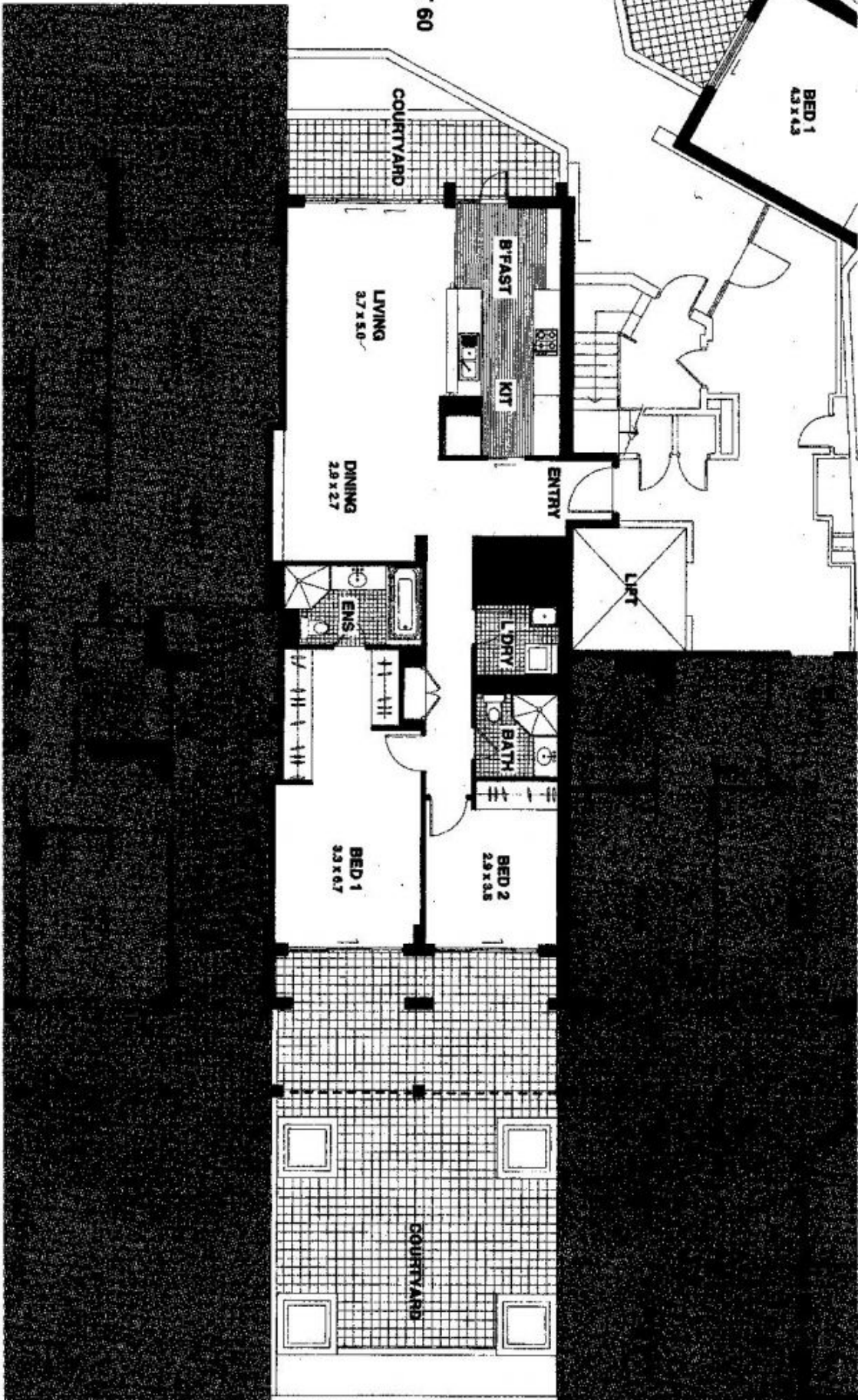
📞 0456 880 004

✉ rentals@morton.com.au

[morton.com.au](http://morton.com.au)



APARTMENT 60



APARTMENT 75