



**morton.**

**Woolloomooloo** 702/22 Sir John Young Crescen

 2  2

Enjoying a north western aspect with spectacular wraparound views this 91sqm apartment is certain to impress. The renowned Domain building has an incredible rooftop entertaining area with unobstructed views of the luscious Domain gardens, CBD skyline and Sydney Harbour. The complex also features gym, spa and sauna, concierge, and security intercom facilities.

- Only a 10 minute walk to harbour foreshores & CBD
- Freshly painted, new carpet and ready to move in
- Well proportioned layout
- Features north and western aspect with water views
- Reverse cycle air-conditioning
- Concierge, spa, gymnasium, sauna
- Secure building with concierge and lift access

**View**

As advertised or by appointment

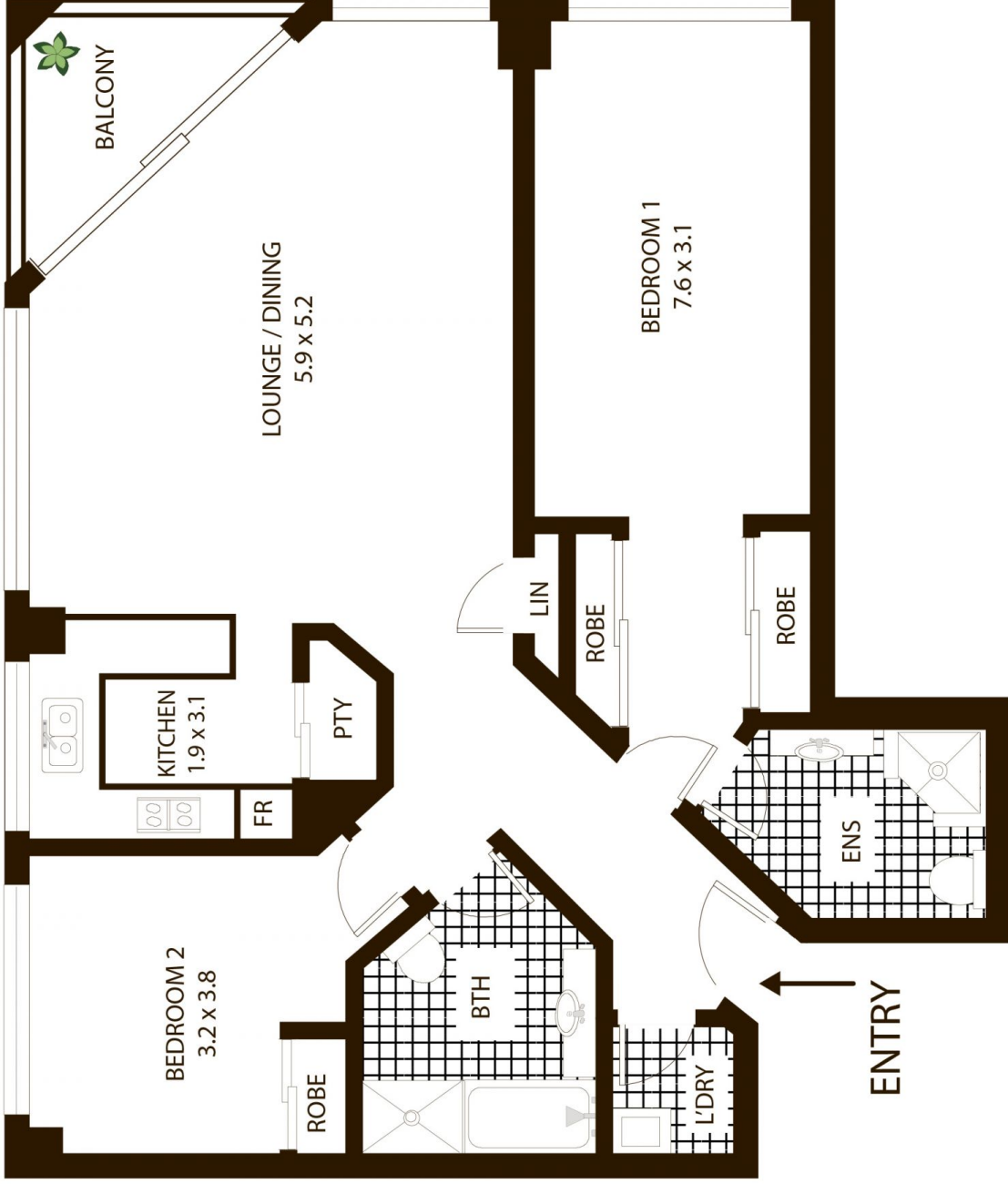
**Agent**

**Morton RE**

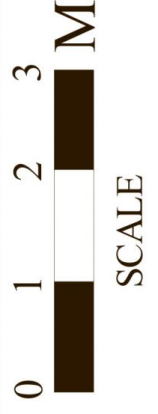


 rentals@morton.com.au

**morton.com.au**



TOTAL APPROX AREA = 91 SQM



# 702/22 Sir John Young Cres, Woolloomooloo

All measurements are approximate only. Plan is provided as an indication of layout