



# morton.

**Woolloomooloo** 102/6 Cowper Wharf Roadway

 1  1  1

Located on the city side of the prestigious Finger Wharf this apartment is perfectly suited to tenants. Large outdoor timber deck off spacious living and bedroom enjoys water and city views.

- Kitchen with gas cooktop and dishwasher
- Bedroom with built-in robes
- Combined lounge/dining area
- Reverse cycle air conditioning
- Video intercom and security building.
- Internal laundry
- Undercover secure car space in Lincoln Crescent
- Hotel style Pool & Gym facilities (membership is required)

### View

As advertised or by appointment

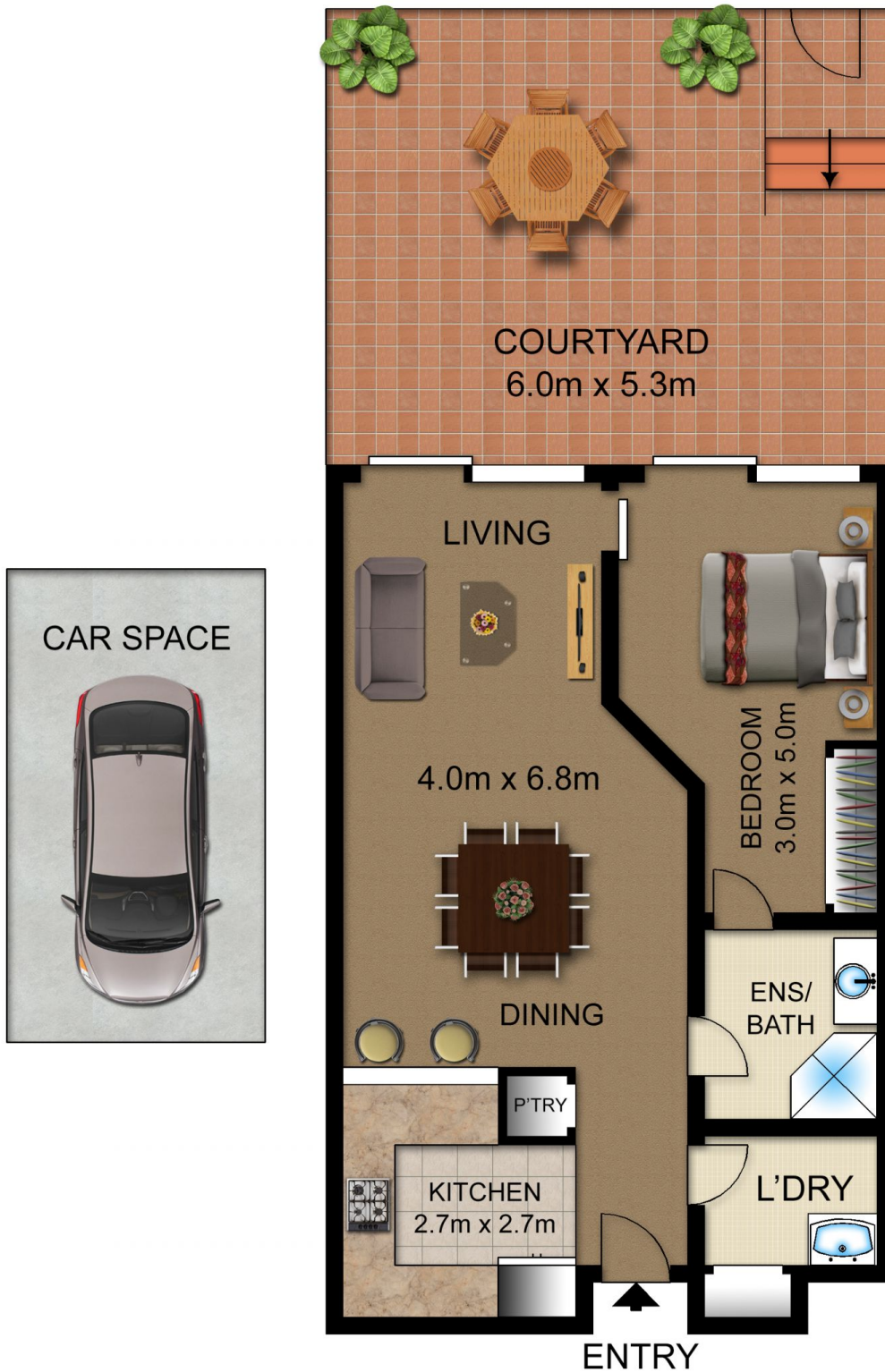
### Agent

**Morton RE**



 [rentals@morton.com.au](mailto:rentals@morton.com.au)

[morton.com.au](http://morton.com.au)



102/6 Cowper Wharf Road, WOOLLOOMOOLOO

Not to scale • All measurements are approximate • Drawn for marketing purposes only • Floorplan by © Industrie Media

