



# morton.

**Surry Hills** 716/20 Pelican Street

 3  2  2

Set over two luxurious levels, this spacious light-filled apartment is in The Monument, a landmark building designed by award winning architects, Wood Marsh. Featuring the latest in chic interior finishes, with access to a stunning glass-edged pool, landscaped gardens and gymnasium.

- Generous open-plan living
- Balcony with harbour views
- Highest quality finishes
- Air conditioning and built-in storage
- Gourmet CaesarStone kitchen
- Miele appliances and eat-in area
- Large master with stunning ensuite
- Main bathroom with extra deep bath
- Large internal laundry room
- Two car spaces and storage cage

### View

As advertised or by appointment

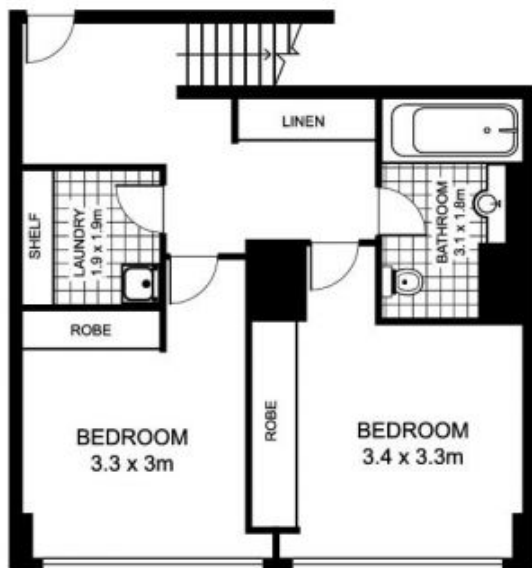
### Agent

**Sarah Fowell**

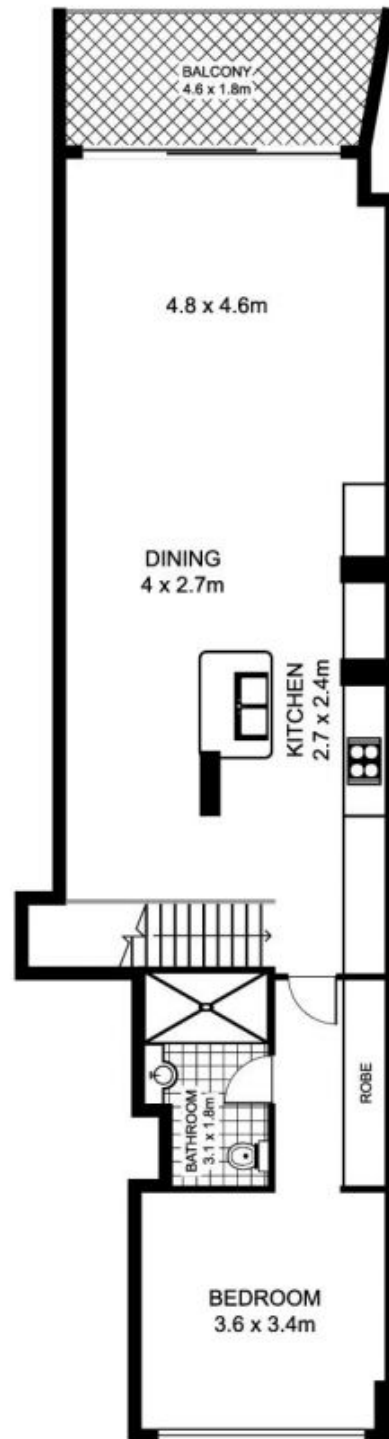
  sarah@morton.com.au

[morton.com.au](http://morton.com.au)

# 716/20 Pelican St, DARLINGHURST



LOWER LEVEL



UPPER LEVEL



Plans by  
**surroundpix**  
com.au  
1300 30 32 40

This floor plan is intended as a guide only. Layout dimensions are approximate only. No representations or warranties of any nature whatsoever are given or intended. Any person using this information should rely on their own enquiries