



morton.

Woolloomooloo 359/6 Wharf Roadway



Offering a practical open plan and usable 45sqm space, this unfurnished studio offering views of the city skyline.

- Separate modern kitchen and stainless steel appliances
- Full bathroom and internal laundry
- Practical floorplan, ample storage
- Conveniently located at the Finger Wharf
- 24hr security waterfront location
- Walk to Potts Point and CBD
- Endless restaurant & bar choices

View

As advertised or by appointment

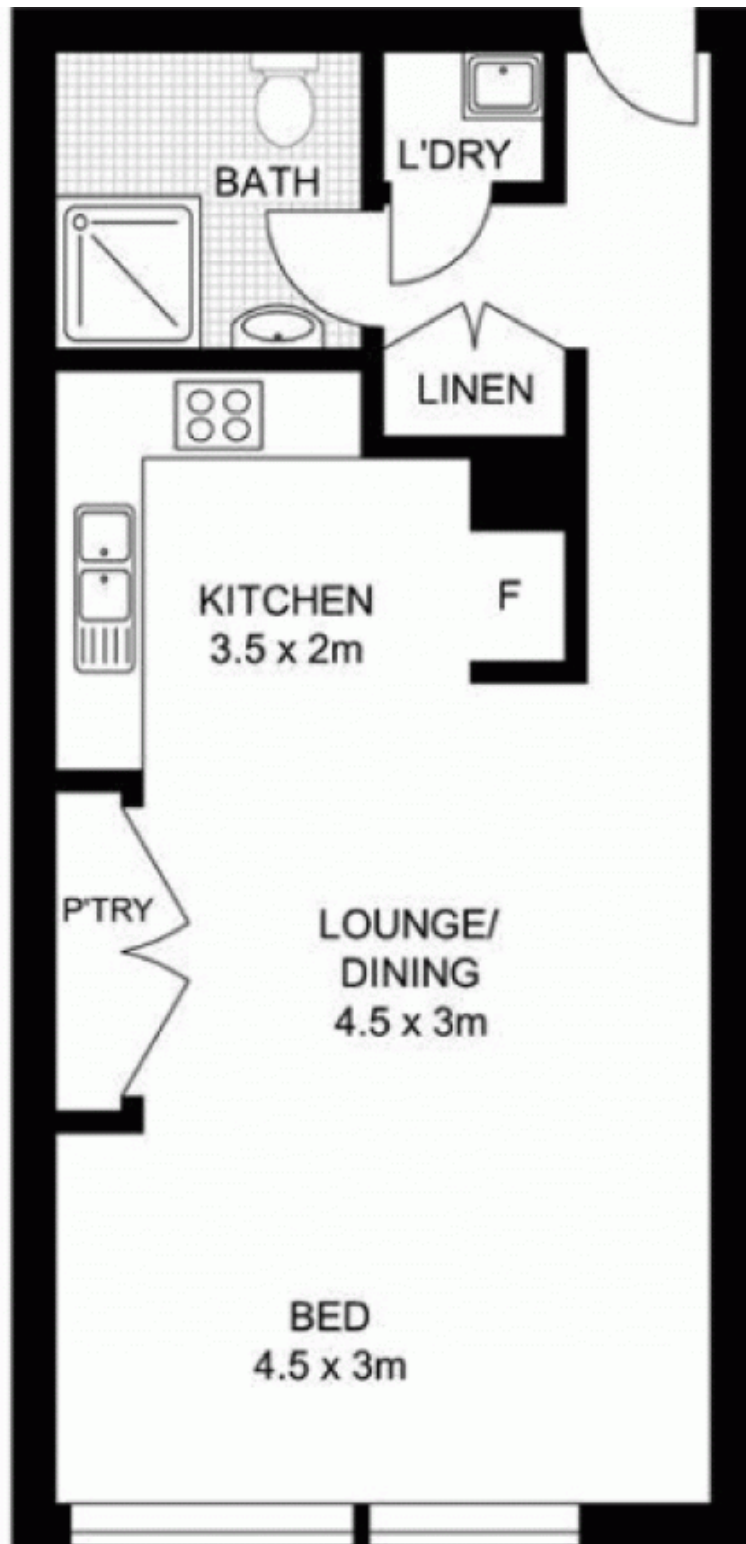
Agent

Sarah Fowell



📧 sarah@morton.com.au

morton.com.au



359/6 COWPER WHARF

WOOLLOOMOOLOO

0

2.5

SCALE BAR in metres