



morton.

Woolloomooloo 578/6 Cowper Wharf Roadway

 2  2

Positioned on the city side of Woolloomooloo's Finger Wharf this loft apartment with study has a wonderful view over the marina, CBD and Botanical Gardens. With many of Sydney's best restaurants located in the same complex, this apartment is perfect for those looking for a sleek inner city lifestyle.

- Combined lounge, kitchen and dining area with high ceilings
- Kitchen with granite benchtops, gas cooktop, microwave and dishwasher
- Study/media room downstairs
- Walk-in wardrobe and ensuite in main bedroom
- Reverse cycle air conditioning and internal laundry with dryer
- Video intercom security and 24 hour security on site
- Parking space available at Lincoln crescent at an additional cost
- Rent will increase to \$1035 per week including parking as of 1st July 2017.

View

As advertised or by appointment

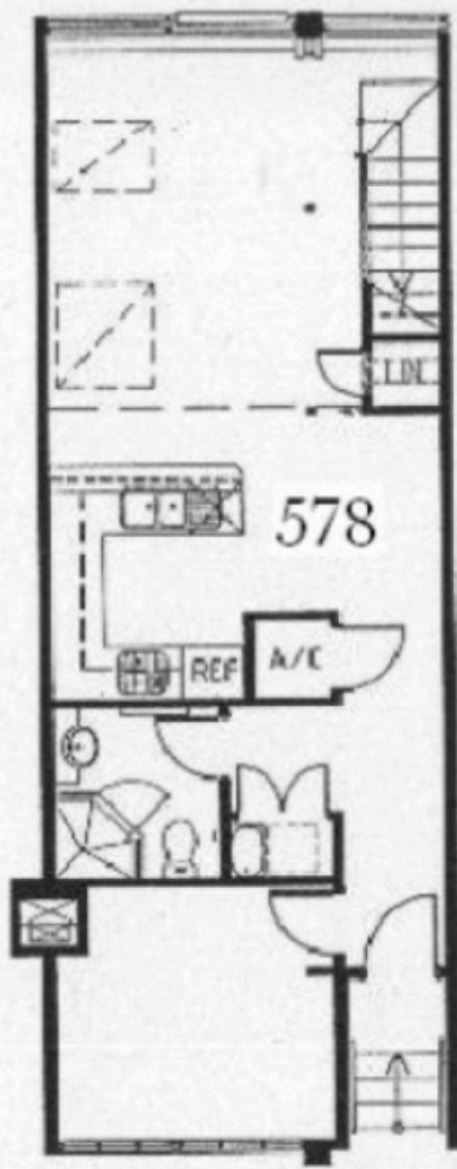
Agent

Sarah Fowell

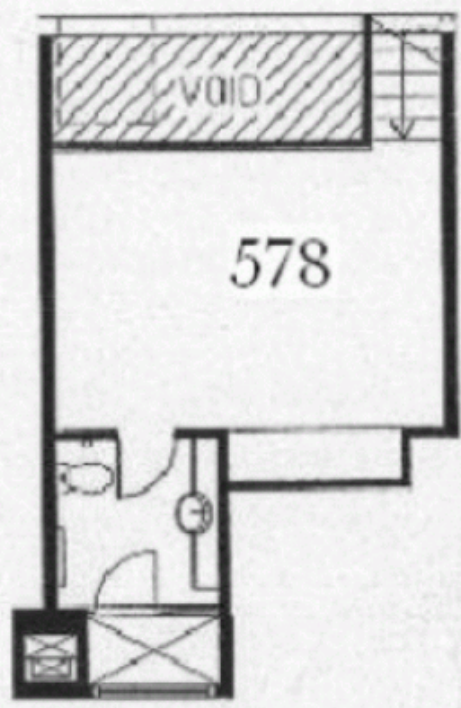


 sarah@morton.com.au

morton.com.au



LEVEL 5



LOFT
LEVEL