



# morton.

Woolloomooloo 526/6 Cowper Wharf Roadway

 1  1  1

Split level apartment with water views towards Potts Point from the Woolloomooloo Finger Wharf. This would suit anyone wanting an apartment within walking distance to the CBD.

- Fully renovated
- Unfurnished
- Timber flooring in living area
- Built in wardrobes
- Reverse cycle air conditioning
- Kitchen with gas cooktop and dishwasher
- Large bathroom with bathtub and shower
- Internal laundry with dryer
- Video intercom security
- One car space located at Lincoln Cres
- 24 hour security on site

#### View

As advertised or by appointment

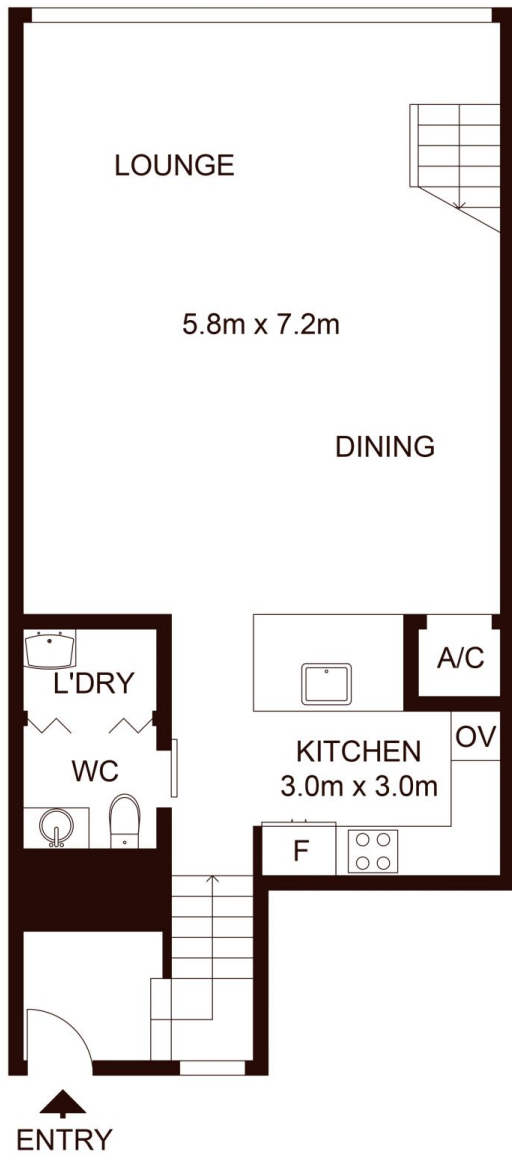
#### Agent

#### Morton

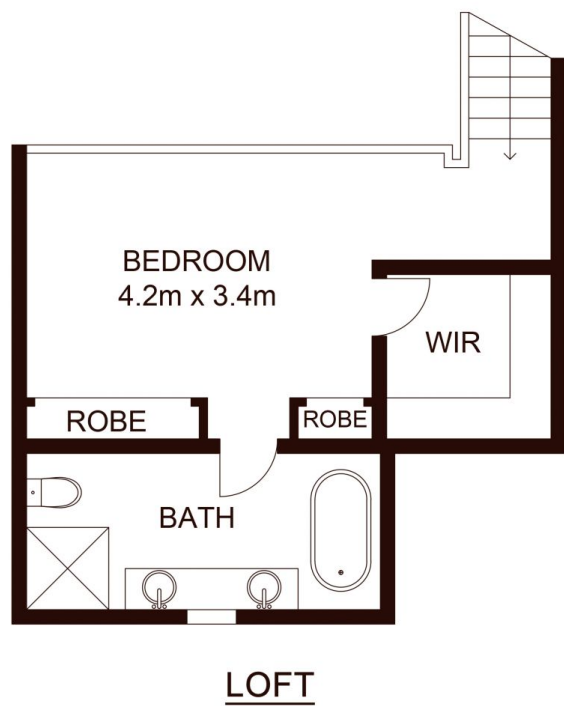


 info@morton.com.au

[morton.com.au](http://morton.com.au)



GROUND FLOOR



LOFT

INTERNAL : 97.5 m<sup>2</sup>

**morton.**

526/6 Cowper Wharf Road, WOOLLOOMOOLOO

Not to scale • All measurements are approximate • Drawn for marketing purposes only • Floorplan by © Industrie Media

