



morton.

Woolloomooloo 133/6 Cowper Wharf Roadway

 1  1  1

Occupying a coveted absolute waterfront position and designed for seamless indoor/outdoor entertaining, this exceptional residence epitomises effortless contemporary living. Flooded with morning sunshine, the views flow across the sparkling harbour waters to Garden Island and historic Potts Point.

- Large private waterfront deck is ideal for entertaining
- Inviting master bedroom, built-ins, ensuite access
- Gourmet gas kitchen boasts CaesarStone benches
- Ducted air conditioning, guest w/c, internal laundry
- With security parking in nearby Lincoln Crescent
- Well presented for the low maintenance lifestyle

View

As advertised or by appointment

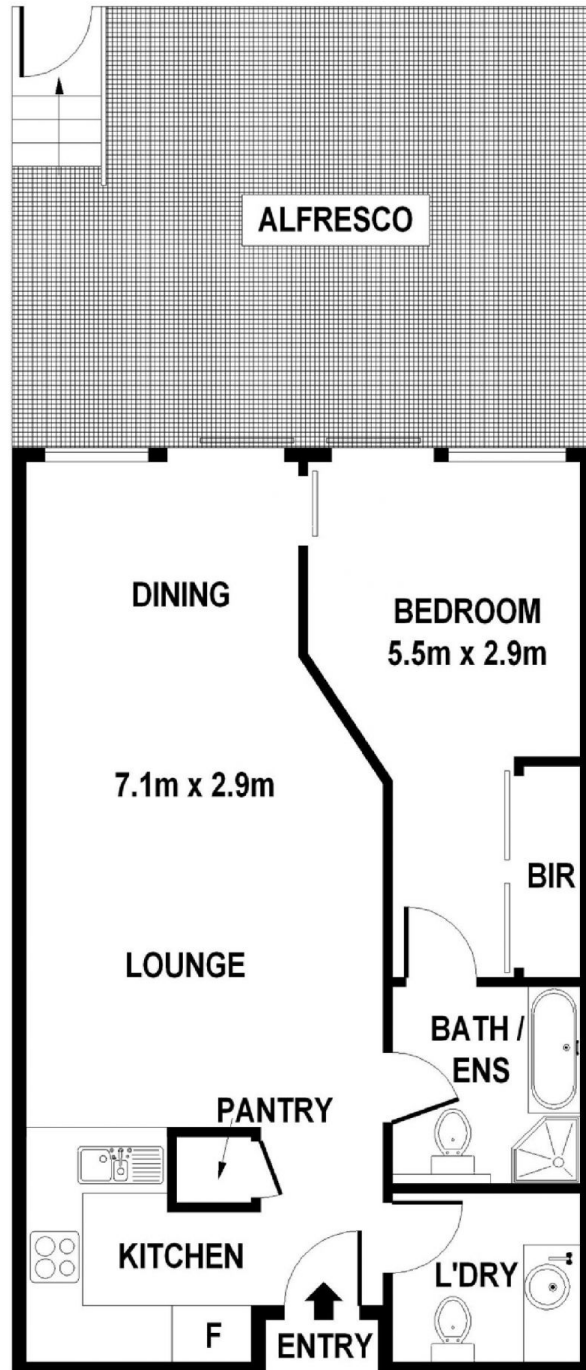
Agent

Sarah Fowell



 sarah@morton.com.au

morton.com.au



133/6 Cowper Wharf Roadway, Woolloomooloo

DISCLAIMER
DIMENSIONS ARE APPROXIMATE AND SHOULD ONLY BE USED AS A GUIDE.
THEY ARE NOT TO SCALE AND NO LIABILITY WILL BE ACCEPTED.