



morton.

Woolloomooloo 22/68 Sir John Young Crescent

🛏 2 🚿 2 🚗 1

Located in one of Sydney's latest developments the 'LUXE' is positioned on the borderline of Sydney City and Woolloomooloo. This east facing unfurnished two bedroom apartment includes stylish finishes using luxurious tiles, stone bench tops, glass splash backs, polished chrome and pressed metal these apartments are not to be missed.

- Beautiful elegant and luxurious interior
- Located on level three
- Great sized open plan kitchen and living area opens out to balcony
- Bright apartment with floor to ceiling glass sliding doors in living area
- Great sized balcony includes gas for BBQ
- Kitchen includes gas cooktop and dishwasher
- King sized master bedroom with built-in robes and ensuite
- Second bedroom also includes built-in robes
- Main bathroom includes mirrored cabinet and combined bath/shower
- Internal laundry with dryer

morton.com.au

View

As advertised or by appointment

Agent

Sarah Fowell



📧 sarah@morton.com.au

CROWN STREET BUILDING

UNIT C206 - LEVEL 2

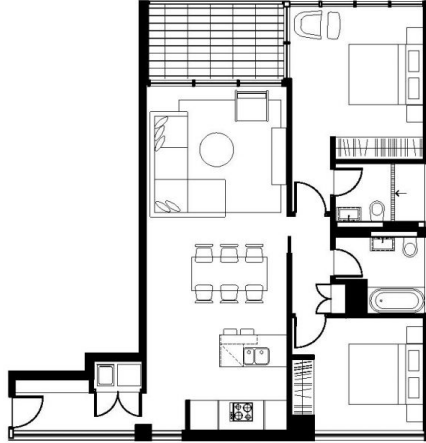
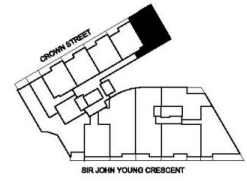
UNIT C306 - LEVEL 3

UNIT C406 - LEVEL 4

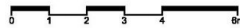
2 BEDROOM

INTERNAL - 80m²

BALCONY - 7m²



LUXE
DOMAIN • SYDNEY



Disclaimer: This plan was prepared prior to construction of the project and is indicative only. Design changes and building tolerances may cause the floor areas and design of the apartment to differ from those shown on this plan. Please refer to the contract of sale for further information. The location of fixtures and fittings is subject to change without notice. Furniture, study fittings and appliances shown are indicative only and are not included in the purchase price.

Brought to you by...
FKP