



morton.

Woolloomooloo 215/6 Cowper Wharf Roadway

 2  2

Recently updated, this bright fully furnished two bedroom apartment on level two in the Woolloomooloo Finger Wharf is one not to miss.

One of the most unique developments in Sydney with many of the original features still intact. Water views towards the CBD and Royal Botanical Gardens.

- Large balcony with amazing views
- Walk in robe and ensuite off master bedroom
- Reverse cycle air conditioning
- Internal laundry with dryer
- Spacious modern kitchen with gas cooktop and dishwasher
- Car space can be rented separately at an extra cost

View

As advertised or by appointment

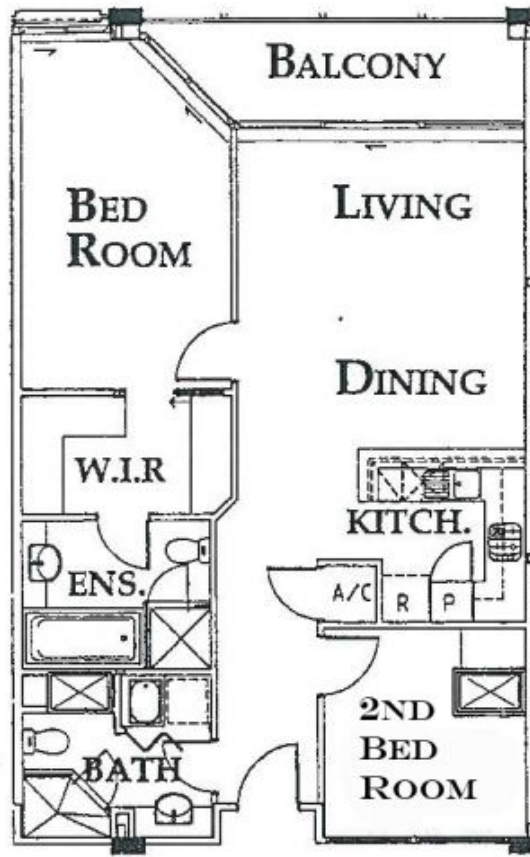
Agent

Sarah Fowell



 sarah@morton.com.au

morton.com.au



THE
WHARF

UNIT No.
2-15

