



**morton.**

**Woolloomooloo** 309/6 Cowper Wharf Roadway

1 1 1

Serenely set in the exclusive Finger Wharf complex, this exceptional residence has been beautifully upgraded for ultra contemporary designer living. Bathed in natural light throughout, the home captures sensational views across the marina to the Botanical Gardens and the central business district.

- A two bed converted to an over-sized one bed apartment
- Well proportioned with historic period appointments
- Spacious master has built-in robes and harbour views
- Chic gas kitchen comes with CaesarStone benches
- Generously open entertaining, floor to ceiling windows
- Deluxe bathroom with double frameless glass shower
- Soaring ceilings, 24hr onsite security, video intercom
- Wharf parking onsite

**View**

As advertised or by appointment

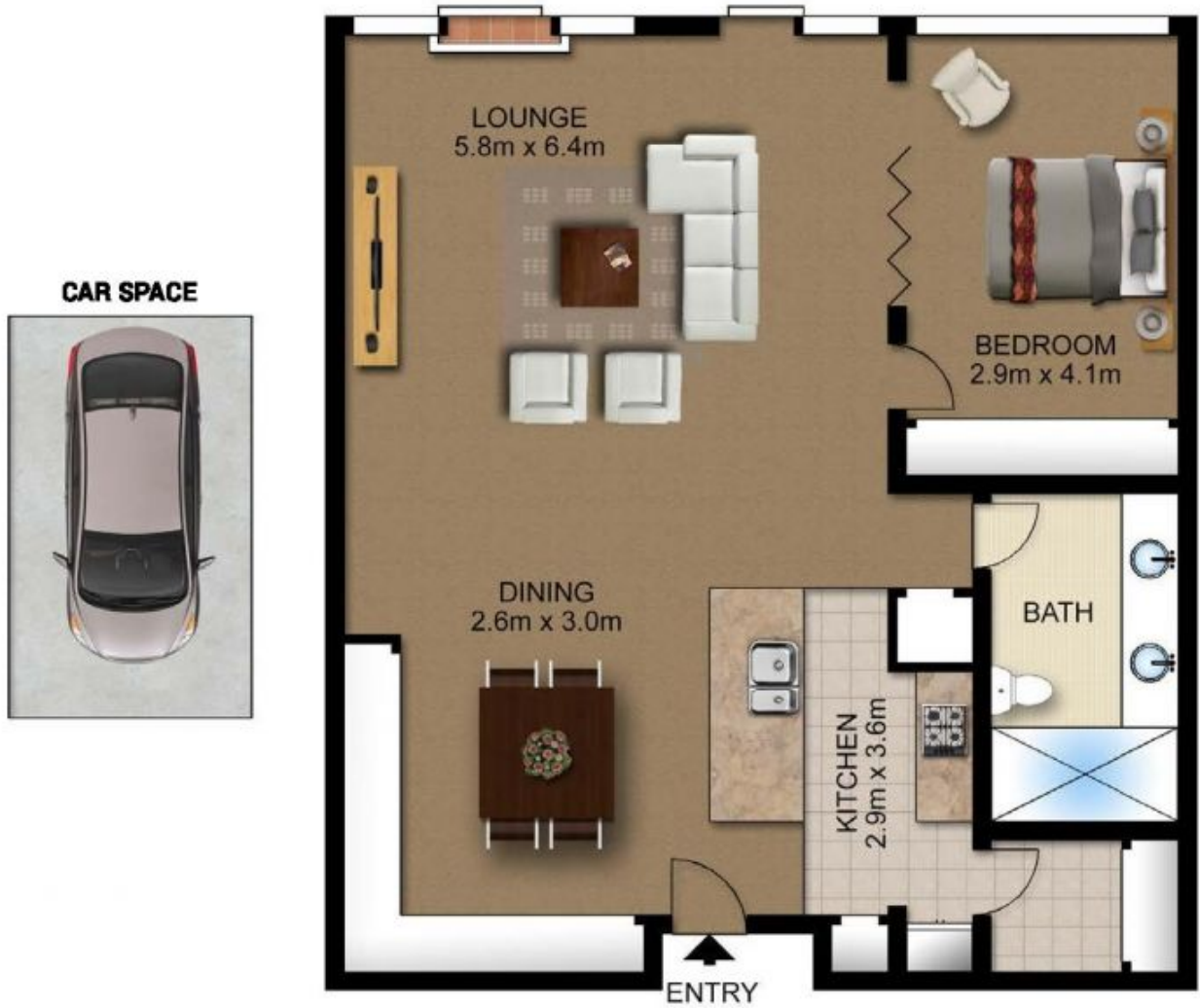
**Agent**

**Sarah Fowell**



sarah@morton.com.au

**morton.com.au**



Scale shown in metres. All dimensions herein are approximate and gathered from sources believed to be reliable. Whilst every effort is made for the accuracy of our floor plans, interested parties should rely on their own enquiries. Floor Plans by Industrie Media | [industriemedia.tv](http://industriemedia.tv)