




morton.

Woolloomooloo 581/6 Cowper Wharf Roadway

 2  2

Unmatched in convenience, quality or position, this exceptional loft apartment opens to embrace magnificent uninterrupted views that flow across the harbour and Royal Botanical Gardens to the soaring skyline.

- Well presented with understated contemporary finishes
- Cleverly configured over two levels, filled with sunlight
- Second room suited as a study or spare bedroom.
- Master bedroom comes with walk-in robe and ensuite
- Sleek granite kitchen boasts European gas appliances
- Open plan lounge and dining with Sydney Iron bark flooring
- 24 hr security, skylights, intercom and ducted air conditioning

View

As advertised or by appointment

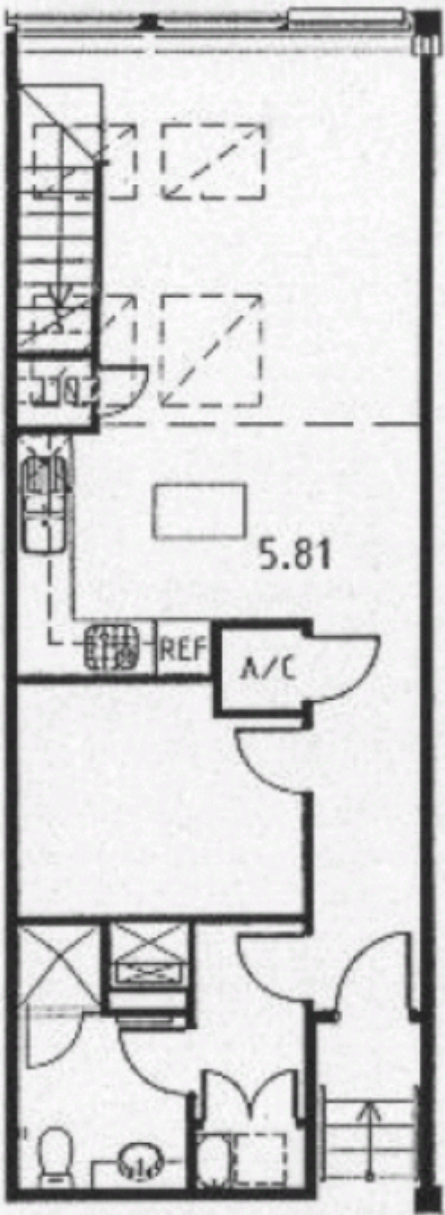
Agent

Morton RE

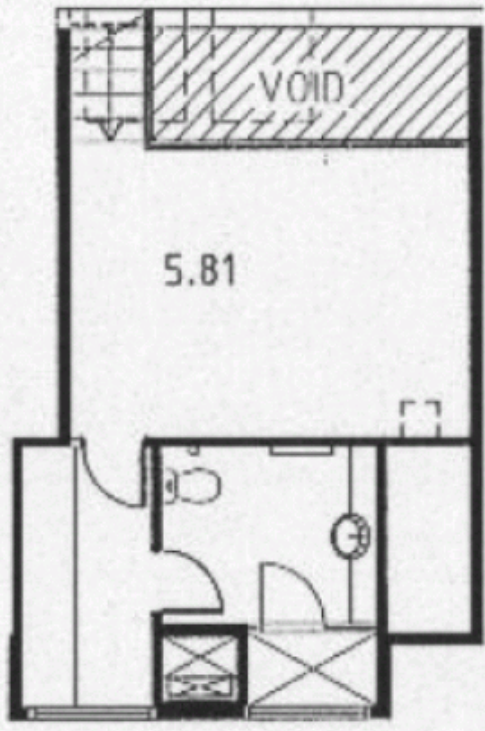


 rentals@morton.com.au

morton.com.au



LEVEL 5



LOFT
LEVEL