



morton.

Woolloomooloo 130/6 Cowper Wharf Roadway

 1  1  1

A unique opportunity to secure a sought after level one terrace apartment at the renowned Finger Wharf at Woolloomooloo. This apartment features a wonderful deck which is great for weekend lunches and evening drinks by the water. Expansive 180 degree water views of Garden Island and Potts Point, could there be a better start and end to the day.

- Generous sized living area and outdoor terrace
- CaesarStone gas kitchen with stainless steel appliances
- Built-in wardrobes and ensuite
- Internal laundry, reverse cycle air conditioning
- 24 hour onsite security
- Secure parking in the building

View

As advertised or by appointment

Agent

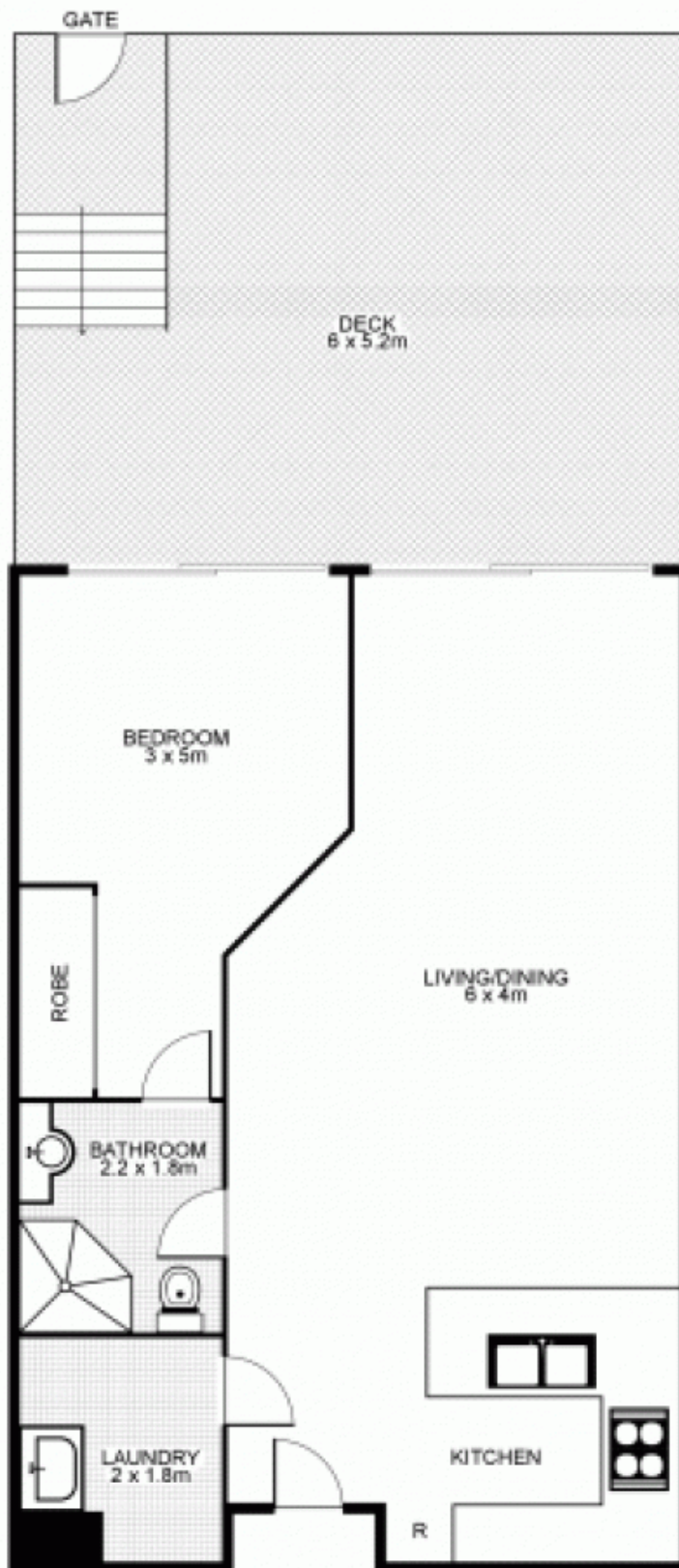
Morton RE



 rentals@morton.com.au

morton.com.au

130/6 Cowper Wharf Road, WOOLLOOMOOLOO



Plans by
surroundpix
com.au
1300 30 32 40

This floor plan is intended as a guide only. Layout dimensions are approximate only. No representation or warranties of any nature whatsoever are given or intended. Any person using this information should rely on their own enquiries.