



morton.

Woolloomooloo 571/6 Cowper Wharf Roadway

🛏 1 🚿 1

Top level apartment in the Woolloomooloo Finger Wharf, one of the most unique developments in Sydney with many of the original features still intact. Fully furnished to an executive standard with LCD TV and leather couch.

- Smart one bedroom loft apartment
- One and half bathrooms
- Internal laundry with dryer
- Modern kitchen with Granite benchtops and Blanco appliances
- Reverse cycle air conditioning
- 24 hour manned security
- Walk to city through the Royal Botanical Gardens
- Sydney's top restaurants at your door
- Luxurious living with a village atmosphere

View

As advertised or by appointment

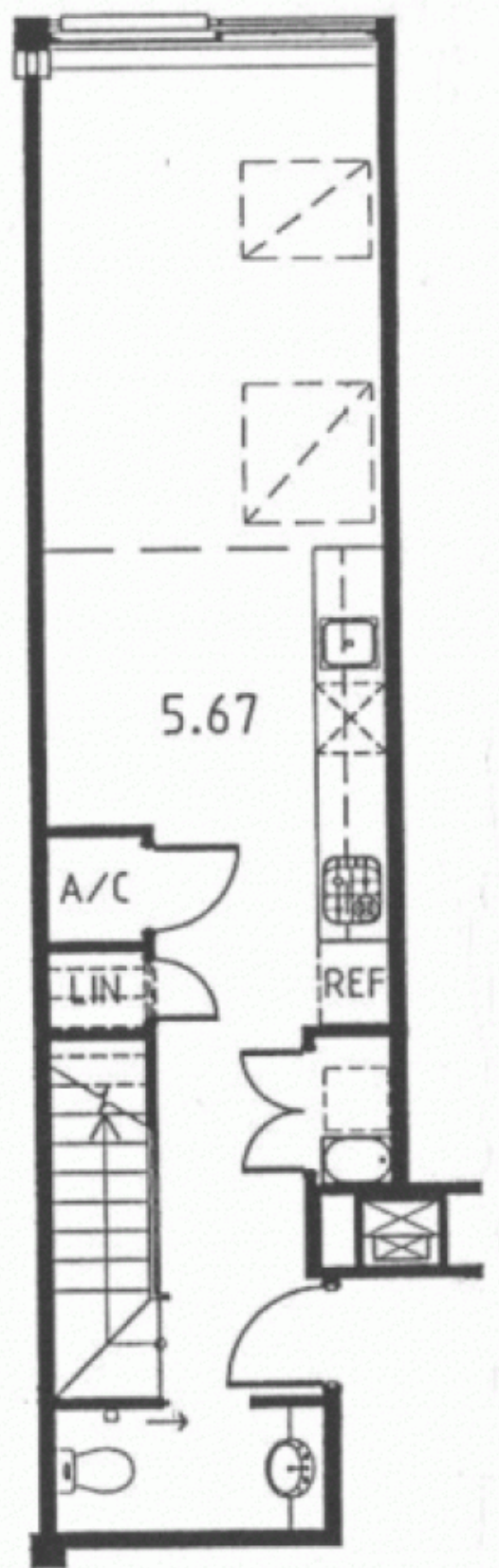
Agent

Morton RE

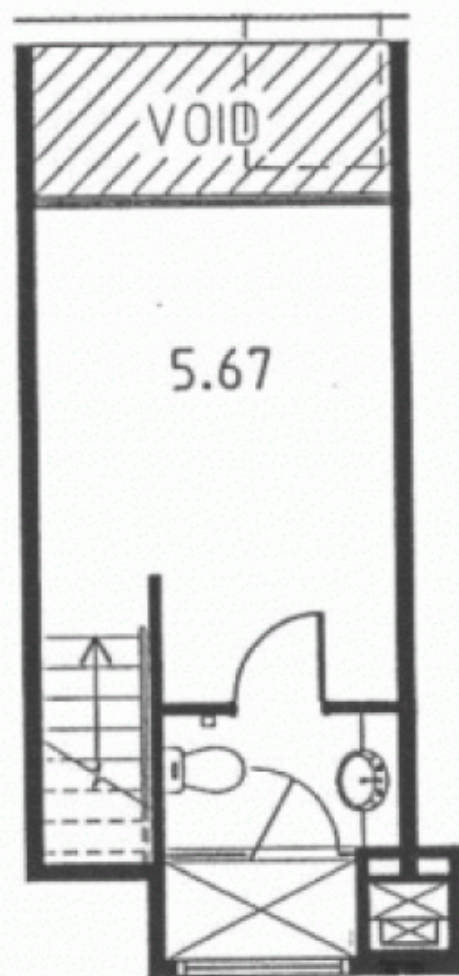


rentals@morton.com.au

morton.com.au



LEVEL 5



LOFT
LEVEL