



morton.

Woolloomooloo 222/6 Cowper Wharf Roadway

 2  2  2

One of Sydney's finest apartments, featured in Vogue Living and Apartment Living - the best selling book of the world's most outstanding apartments. Exceptional for its unique design and prime position on the North West corner of the original Finger Wharf.

Architect Alec Tzannes was enlisted by the owner to reconfigure the original developers plan, to capitalise on the spectacular views while creating a flowing and flexible living space. The result is a glamorous, urban, harbour front home.

- Fully furnished
- The entrance hall flows naturally to the living and dining area
- Views across the marina to the CBD, Domain and Harbour beyond
- Sleek kitchen with European appliances and excellent storage
- Balcony extends the living space to the water's edge
- External louvres allow control and protection from the elements

morton.com.au

View

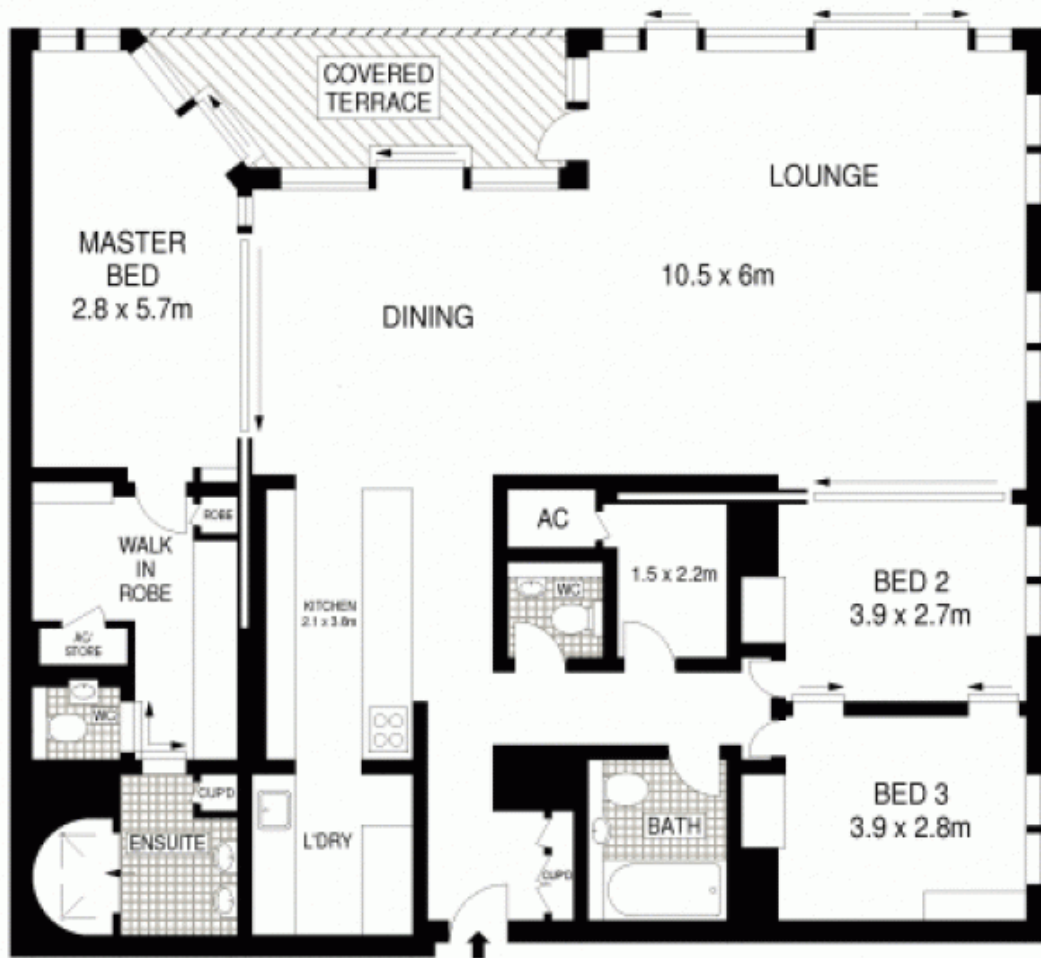
As advertised or by appointment

Agent

Morton RE



rentals@morton.com.au



GROUND FLOOR



222/6 COWPER WHARF ROAD
 SYDNEY



INT : 152m²
 EXT : 9m²



ALL INFORMATION CONTAINED HEREIN IS GATHERED FROM SOURCES WE BELIEVE TO BE RELIABLE. HOWEVER WE CANNOT GUARANTEE ITS ACCURACY AND INTERESTED PERSONS SHOULD RELY ON THEIR OWN ENQUIRIES. DIMENSIONS ARE APPROXIMATE