

**morton.**

**WOOLLOOMOOLOO** S201/68 Sir John Young C

 1  1  1

\*\*\*Inspection times are available. To be notified of the inspection times via email or SMS (free of charge), simply submit an enquiry here with your contact details. Alternatively please search for the listing on our [www.mortonandmorton.com.au](http://www.mortonandmorton.com.au) to book your own inspection online.\*\*\*

Located in one of Sydney's latest developments the 'LUXE' is positioned on the borderline of Sydney City and Woolloomooloo. This east facing unfurnished one bedroom apartment includes stylish finishes using luxurious tiles, stone bench tops, glass splash backs, polished chrome and pressed metal these apartments are not to be missed!

- Beautiful elegant and luxurious interior
- Great sized open plan kitchen and living area
- Kitchen includes gas cooktop and dishwasher
- Floor to ceiling glass sliding doors open to balcony
- Large balcony overlooks garden includes gas for BBQ
- Master bedroom with built-in robes and floor to ceiling glass

**[morton.com.au](http://morton.com.au)**

**View**

As advertised or by appointment

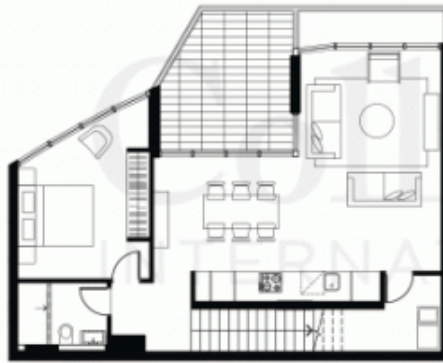
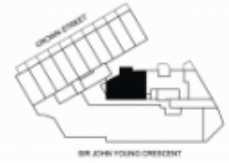
**Agent**

**Morton RE**



 [rentals@morton.com.au](mailto:rentals@morton.com.au)

SIR JOHN YOUNG CRES. BUILDING  
UNIT S201 - LEVEL 1  
1 BEDROOM  
INTERNAL - 73m<sup>2</sup>  
COURTYARD - 12m<sup>2</sup>



LEVEL 1



LEVEL 2 - ENTRY

LUXE  
DOMAIN - SYDNEY



Disclaimer: This plan was prepared prior to construction of the project and is indicative only. Design changes and building tolerances may cause the floor area and design of the apartment to differ from those shown on this plan. Please refer to the contract of sale for further information. The location of fixtures and fittings is subject to change without notice. Furniture, study desks and appliances shown are indicative only and are not included in the purchase price.

Brought to you by...  
FKP