



morton.

Pyrmont 206/8 Wharf Crescent

 3  2  2

- Available to lease fully furnished at additional cost
- Appointed with the most exacting of designer finishes
- Beautifully crafted for luxury low maintenance living
- CaesarStone entertainer's kitchen, Miele gas fittings
- Entertaining terrace
- Ducted air conditioning
- Garaged parking for two vehicles plus storage
- In an ultra prestigious boutique peninsula community

View

As advertised or by appointment

Agent

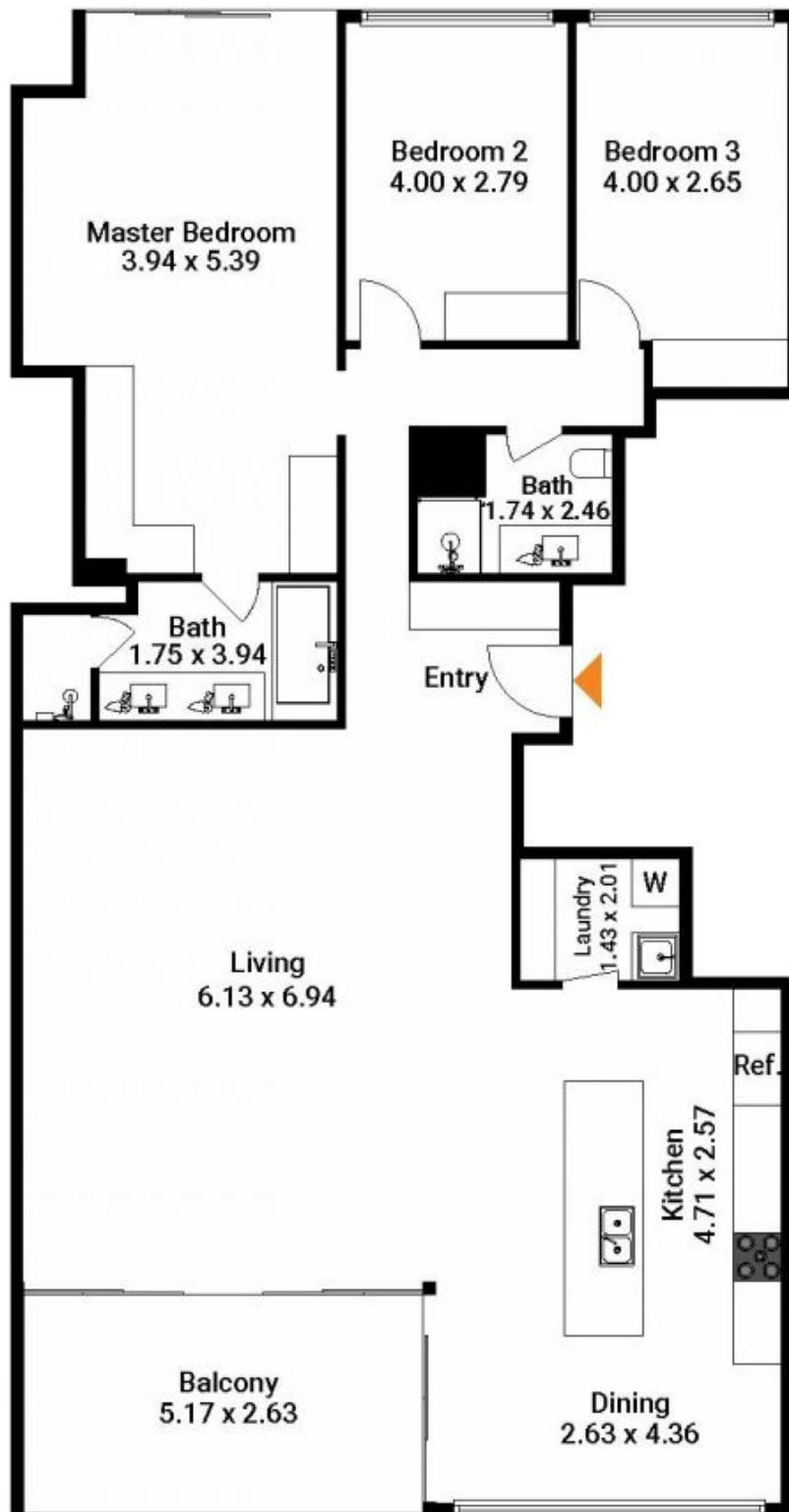
Sarah Fowell

 0437 492 129

 sarah@morton.com.au

Private and peaceful with light-filled interiors that are soothed by cooling harbour breezes, this is the ultimate harbourfront lifestyle. A benchmark property in a vibrant village enclave, it is no more than a short walk to chic cafe culture, entertainment venues and the heart of the city.

morton.com.au



Total SQM On Title : 166 SQM

The floor plan is not to scale; measurements are indicative and in metres. Exterior elements are not in position. Plans should not be relied on. Interested parties should make and rely on their own enquiries.



The floor plan is not to scale; measurements are indicative and in metres. All features included in this 3D plan are for inspiration purposes only. This is not an exact replica of the property or the position of exterior elements. Plans should not be relied on. Interested parties should make and rely on their own enquiries.

Produced by **DIAKRIT**