



# morton.

**Pyrmont** T09/1 Distillery Drive

 3  2  1

Tranquilly positioned in one of Jacksons Landing's most exclusive boutique communities, this stunning residence is a home of undeniable pedigree. Flowing over 150sqm and two well configured levels, the stylish low maintenance interiors open to capture views across the harbour, Anzac Bridge and Blackwattle Bay.

- Prime corner position, drenched in natural sunlight
- Open plan lounge and dining area, sunny balcony
- Secluded master with ensuite and walk-in wardrobe
- Designer CaesarStone kitchen
- AEG gas appliances and self-cleaning oven
- Direct pedestrian access from established parklands
- Storage cage, internal storeroom and air conditioning
- Quality finishes throughout and immediate parking access
- Study alcove, high ceilings, alarm and video intercom

### View

As advertised or by appointment

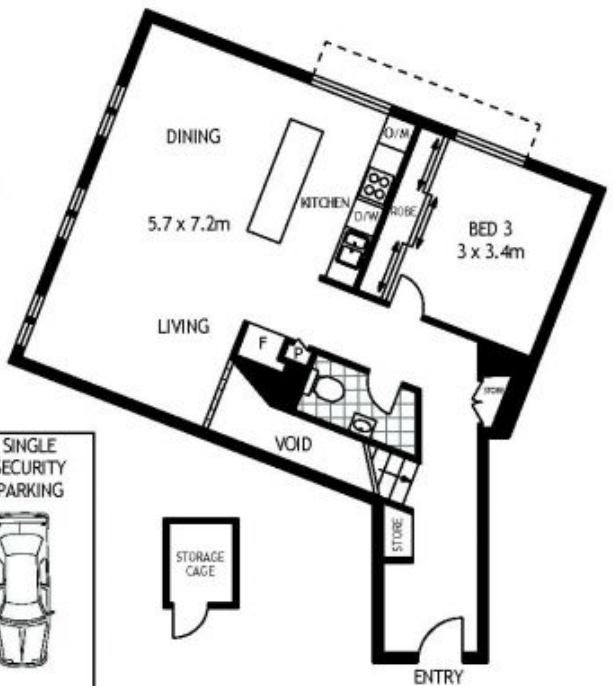
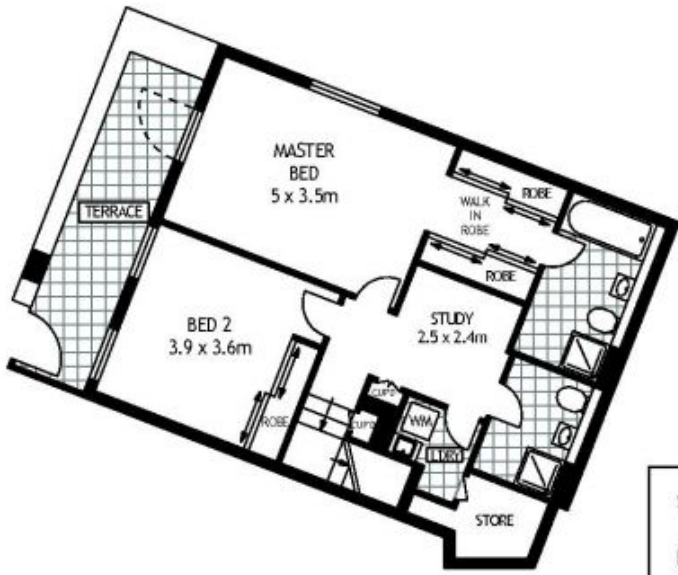
### Agent

**Patricia Carter**

 0456 880 004

 [patricia@morton.com.au](mailto:patricia@morton.com.au)

[morton.com.au](http://morton.com.au)



T09/1 DISTILLERY DRIVE

PYRMONT

SCAPE Floor Parking Disclaimer: This floor plan is conceptual only. It is provided for illustrative purposes only and should not be relied upon. We make no guarantees to the correctness of this plan. All interested parties should make and rely on their own enquiries in determining the accuracy of the information contained in this floor plan.