



morton.

Pyrmont D903/24-26 Point Street

 2  2  1

This exceptional contemporary apartment presents a low maintenance executive lifestyle. A perfect north easterly aspect with beautiful direct sunlight and views of the harbour and historic finger wharves. Located in the sought after Watermark Building. A few minutes stroll to the city centre and village life.

- Impeccably appointed for effortless entertaining
- Chic kitchen, Smeg gas appliances, granite benches
- Generous master with walk-in robe, balcony, en suite
- Immaculately presented with cutting edge finishes
- Open living and dining flows to a sunny balcony
- Quality designer bathrooms, European style laundry
- NO PETS

View

As advertised or by appointment

Agent

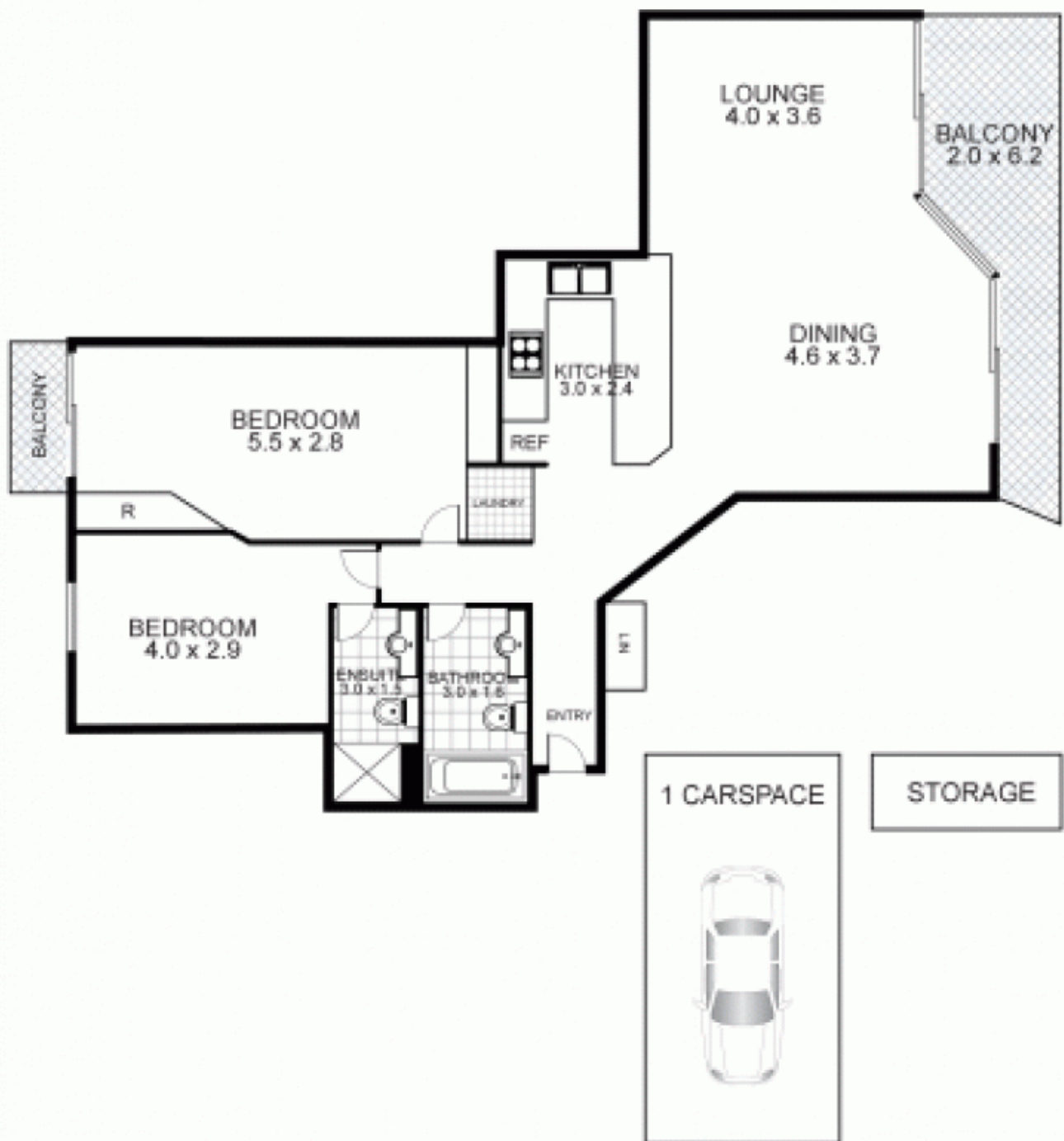
Patricia Carter

 0456 880 004

 patricia@morton.com.au

morton.com.au

D903/24-26 Point Street, PYRMONT



This floor plan is intended as a guide only. Layout dimensions are approximate only. No representation or warranties of any nature whatsoever are given or intended. Any person using this information should rely on their own enquiries.



Plans by
surroundpix
com.au
1300 30 32 40