



morton.

Chippendale 1206/3 Carlton Street

 2  1  1

In an iconic award-winning building of internationally-renowned and unrivaled prestige, this exceptional apartment defines cutting edge city living.

- Offering panoramic views
- Flawlessly appointed with attention to detail
- Just a short walk to TAFE, UTS and the University of Sydney
- Deluxe integrated Caesar Stone kitchens, chic bathroom
- 24 hour concierge, pool, huge gymnasium, sauna and spa
- Ducted air conditioning, tiled floors and European laundry
- Generous balcony, video intercom, floor to ceiling windows
- Environmentally sustainable with solar power and green walls

View

As advertised or by appointment

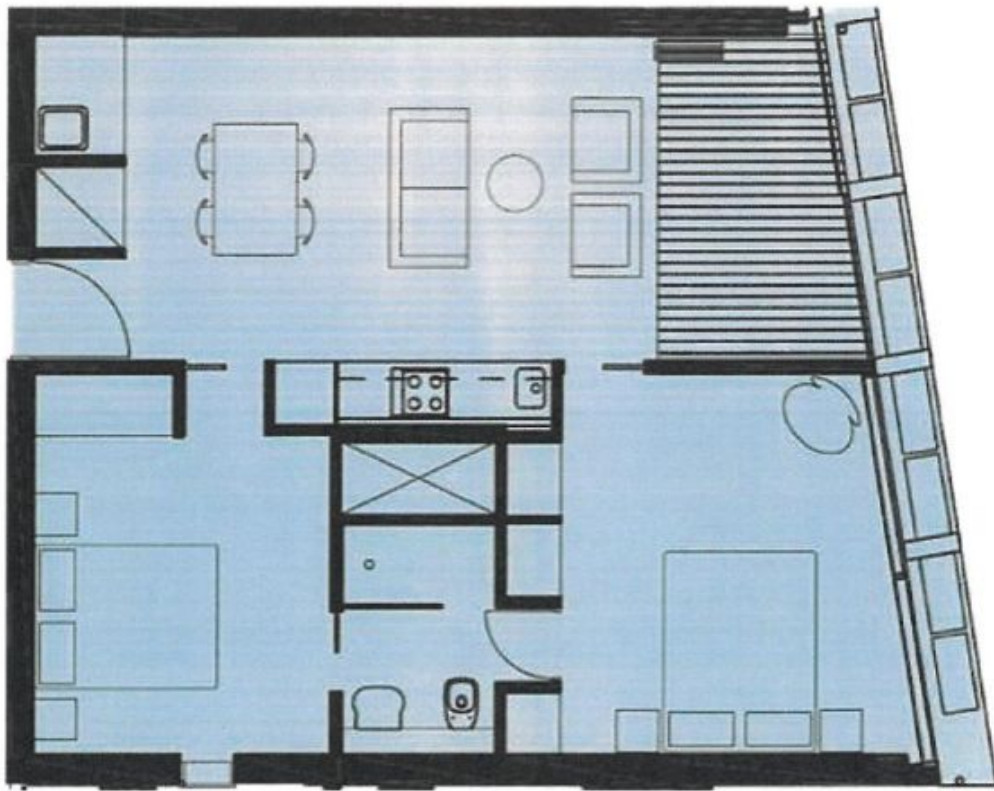
Agent

Patricia Carter

 0456 880 004

 patricia@morton.com.au

morton.com.au



Indicative floor plan for your reference only