



morton.

Pyrmont 60/1 Murray Street

 2  2  1

LEASED IN ONE WEEK \$900 per week. We have more tenants needing properties to lease in Pyrmont and surrounding suburbs. Please call David Lipman 0409 663 535, or email david@morton.com.au if you are a Landlord looking to lease your property.

Located across the road from the Pyrmont Bridge, on Darling Harbour's doorstep, this spacious two bedroom apartment is situated on the ground level boasting a huge private courtyard with garden beds and a north facing aspect into the common gardens, creating quiet and peaceful living.

- Huge private courtyard ideal for alfresco living and entertaining.
- Spacious open plan carpeted lounge and dining with floor to ceiling windows and ground level access.
- Leafy north facing courtyard.
- Gourmet gas kitchen with ample granite bench and storage space, breakfast area and smeg stainless steel integrated appliances.

morton.com.au

View

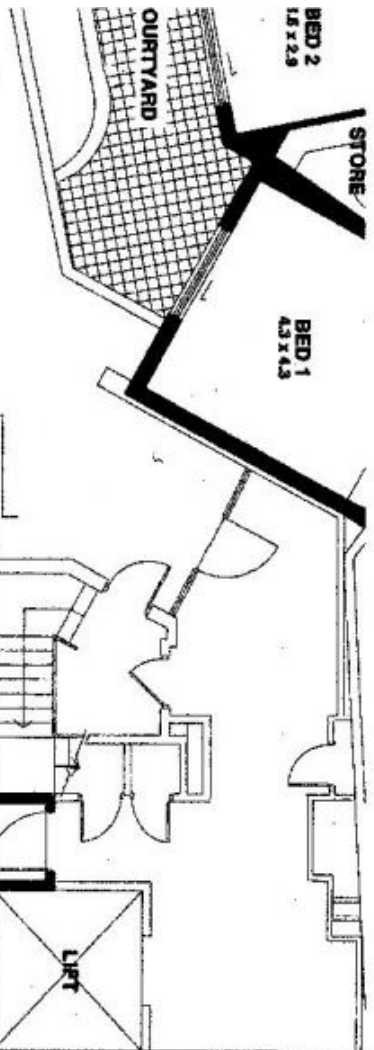
As advertised or by appointment

Agent

Patricia Carter

 0456 880 004

 patricia@morton.com.au



APARTMENT 60

APARTMENT 75

