



morton.

Ashfield 305/268-270 Liverpool Road

 1  1  1

Be the first to live in this stunning new development in a prime inner west location. Situated in the heart of Ashfield, this property combines sophisticated urban living with superb finishes, stylish and functional design.

- Designed by award-winning architects 'Marchese Partners'
- Large designer bedroom including built-in wardrobe
- Open plan living/dining area with oak timber floor boards
- High quality finishes with carpet bedroom floors
- Multi-purpose room/study
- High quality reconstituted stone kitchen bench top
- Sun room and balcony with view.
- Gas cooking and dishwasher
- Modern bathroom and internal laundry
- Ducted air conditioning throughout
- Secure car space and storage cage

View

As advertised or by appointment

Agent

Patricia Carter

 0456 880 004

 patricia@morton.com.au

morton.com.au

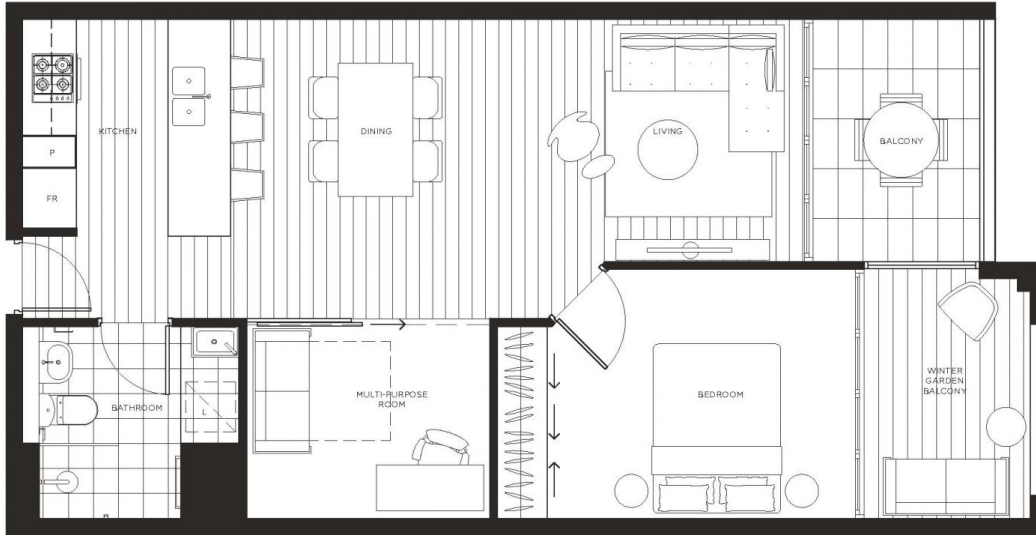


LUMINA
ASHFIELD

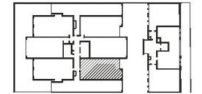
APT 205/305/505/605/705

ONE BED + MULTI-PURPOSE ROOM

INTERNAL SQM	57
EXTERNAL SQM	10
TOTAL SQM	67



L = LAUNDRY, P = PANTRY, FR = FRIDGE



NORTH

270 LIVERPOOL RD, ASHFIELD | 1800 685 328 | LUMINAASHFIELD.COM.AU

CBRE

DISCLAIMER: This plan is a guide only and does not constitute an offer or contract. Please note changes may be made during the development and areas, fittings, fixtures and specifications are subject to change without notice in accordance with the terms of the contract of sale. All parties must rely on their own investigation to validate this information as it is not guaranteed. No liability will be accepted for any inaccuracy or misstatement.