



# morton.

**Newtown** 27/37 Iredale Street

 1  1  1

A quiet street location in the heart of Newtown is the unbeatable lifestyle setting for this light filled one-bedroom apartment where just footsteps from your door you can grab a coffee, chat in a wine bar or jump on a train to the CBD. Featuring bright interiors, good proportions and its own car space


- Quiet leafy outlook with glimpses of the city and Centre Point
- First floor positioning within a security complex
- Wide terrace accessed from living and bedroom
- North east aspect and good natural light throughout
- Main bedroom with Built in wardrobe
- Galley style kitchen with gas cooking
- Bathroom combined with internal laundry
- Secure basement parking space and lift access


### View

As advertised or by appointment

### Agent

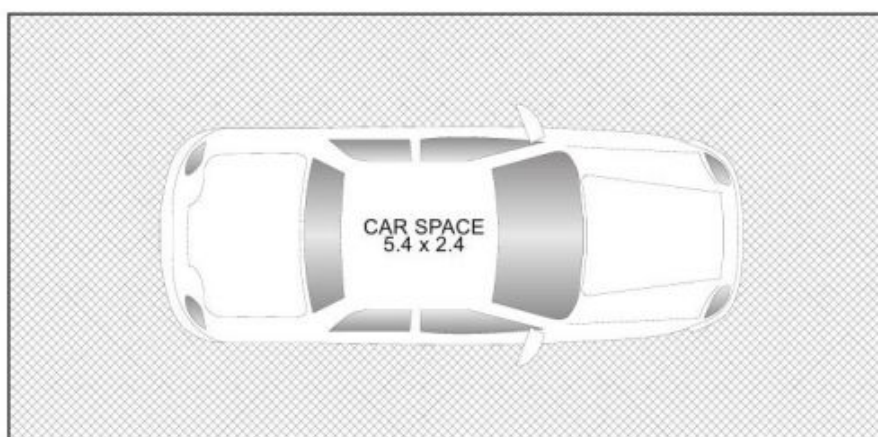
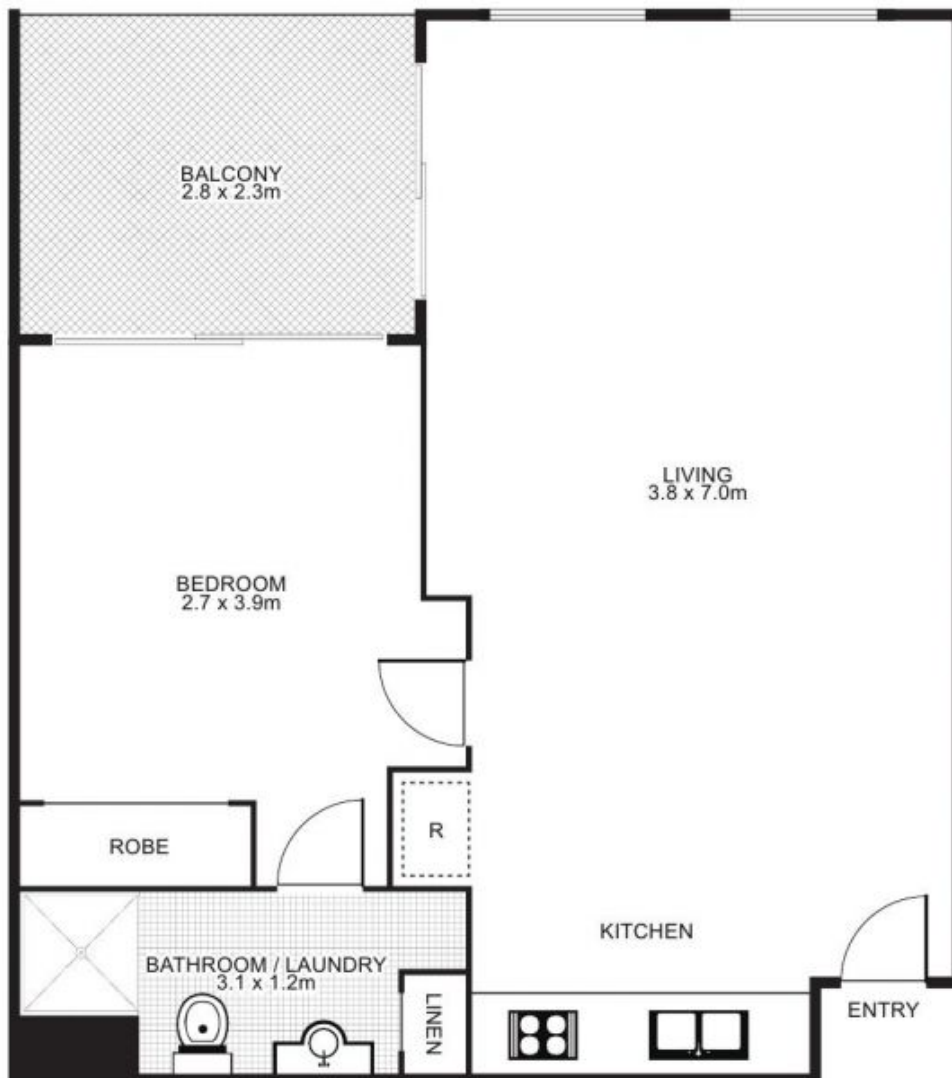
**Patricia Carter**

 0456 880 004

 [patricia@morton.com.au](mailto:patricia@morton.com.au)

[morton.com.au](http://morton.com.au)

# 27/37 Iredale Street, NEWTOWN



Plans by  
**surroundpix**  
com.au  
1300 30 32 40

This floor plan is intended as a guide only. Layout dimension are approximate only. No representation or warranties of any nature whatsoever are given or intended. Any person using this information should rely on their own enquiries.