



# morton.

**Pyrmont** 105/209 Harris Street

 2  2  1

Located in the highly sought after 'Bauhaus' this unique floor plan over two levels offers fantastic outdoor living and 180 degree views from Blackwattle Bay, the Anzac Bridge and the city skyline.

- Open plan light filled lounge and dining open
- Enormous sunny outdoor terrace with harbour views
- Beautifully appointed kitchen, timber floors and granite bench tops
- Stainless steel appliances, dishwasher and ample cupboard space
- Second level has both generous bedrooms with built-ins
- Master bedroom with ensuite
- Additional balcony also enjoying the harbour views
- Reverse cycle air conditioning and excellent storage
- Full building security, well equipped gym and common rooftop
- Under cover secure parking, storage cage and visitor parking

### View

As advertised or by appointment

### Agent

**Patricia Carter**

 0456 880 004

 [patricia@morton.com.au](mailto:patricia@morton.com.au)

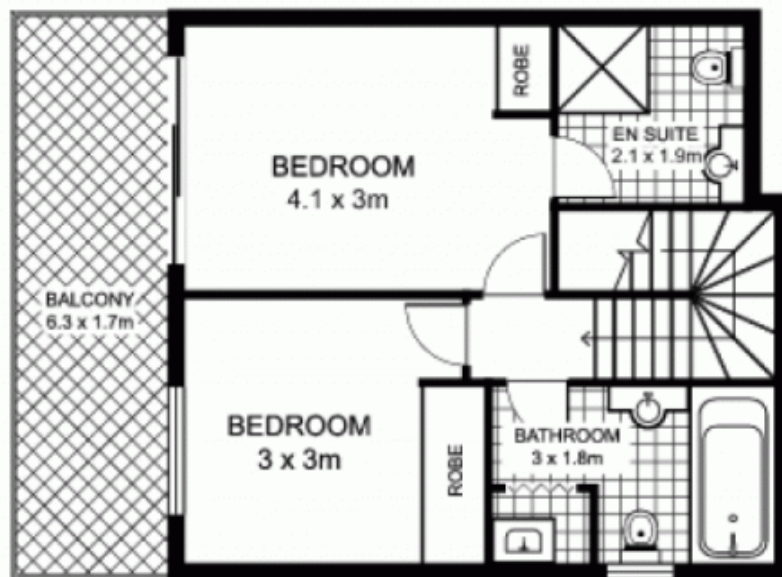
[morton.com.au](http://morton.com.au)

# 105/209-211 Harris St, PYRMONT

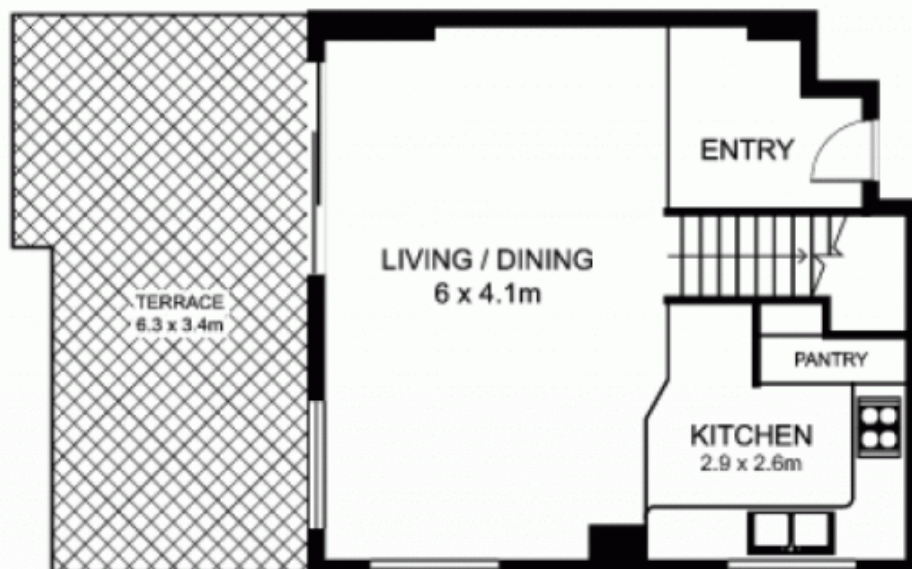
SCALE 



\* note  
all measurements are approximate only.  
Plan is provided only as an indication of layout.



UPPER LEVEL



LOWER LEVEL