



**morton.**

**Pyrmont** 51/56 Pirrama Road

 1  1  1

\*\*\*Inspection times are available. To be notified of the inspection times via email or SMS (free of charge), simply submit an enquiry here with your contact details. Alternatively please search for the listing on our website <http://www.morton.com.au> to book your own inspection online.\*\*\*

Located at the northern end of the award-winning Sydney Wharf with the option of furnished or unfurnished, designed by the acclaimed PTW architects, this furnished unique apartment offers easy entertaining and a bespoke city lifestyle.


- Stunning designer furnishings throughout
- Enjoying sprawling water views from every room

**View**

As advertised or by appointment

**Agent**

**Morton RE**

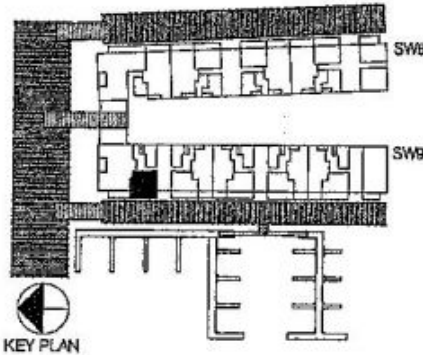
   
 [rentals@morton.com.au](mailto:rentals@morton.com.au)

**morton.com.au**

# SYDNEY WHARF 9

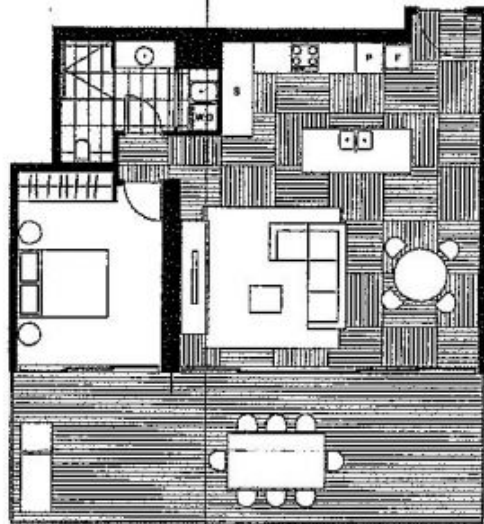
## 9.1.51

SYDNEY WHARF 9  
PYRMONT BAY  
1 BEDROOM



Living	3.7 x 4.4m
Dining	2.9 x 4.4m
Bedroom 1	3.2 x 3.7m

- Note:
- Floor plans are drawn at an unspecified scale.
  - Room sizes of Bedrooms are taken to the front face of robe.
  - Under bench oven in Kitchen.



LEVEL 1

**Disclaimer:**

The Layout Plan is a guide only and was prepared prior to completion of the project. This information contained herein is believed to be correct, however is not guaranteed. Dimensions are approximate. Changes will undoubtedly occur during the development, structure, walls, fittings, fixtures and specifications may be subject to change without notice in accordance with the provisions of the Contract for Sale. Balconies necessary for services are not depicted. The fixtures depicted in the Layout Plan is not included in the sale. The position of the furniture should not be taken to indicate the final position of power points, TV connection points and the like. Floor finish is indicative only. Prospective purchasers must rely on their own enquiries.