



# morton.

**Pyrmont** D903/24-26 Point Street

 2  2  1

This exceptional contemporary apartment presents a low maintenance executive lifestyle. A perfect north easterly aspect with beautiful direct sunlight and views of the harbour and historic finger wharves. Located in the sought after Watermark Building. A few minutes stroll to the city centre and village life.

- Impeccably appointed for effortless entertaining
- Chic kitchen, Smeg gas appliances, granite benches
- Generous master with walk-in robe, balcony, en suite
- Immaculately presented with cutting edge finishes
- Open living and dining flows to a sunny balcony
- Quality designer bathrooms, European style laundry

### View

As advertised or by appointment

### Agent

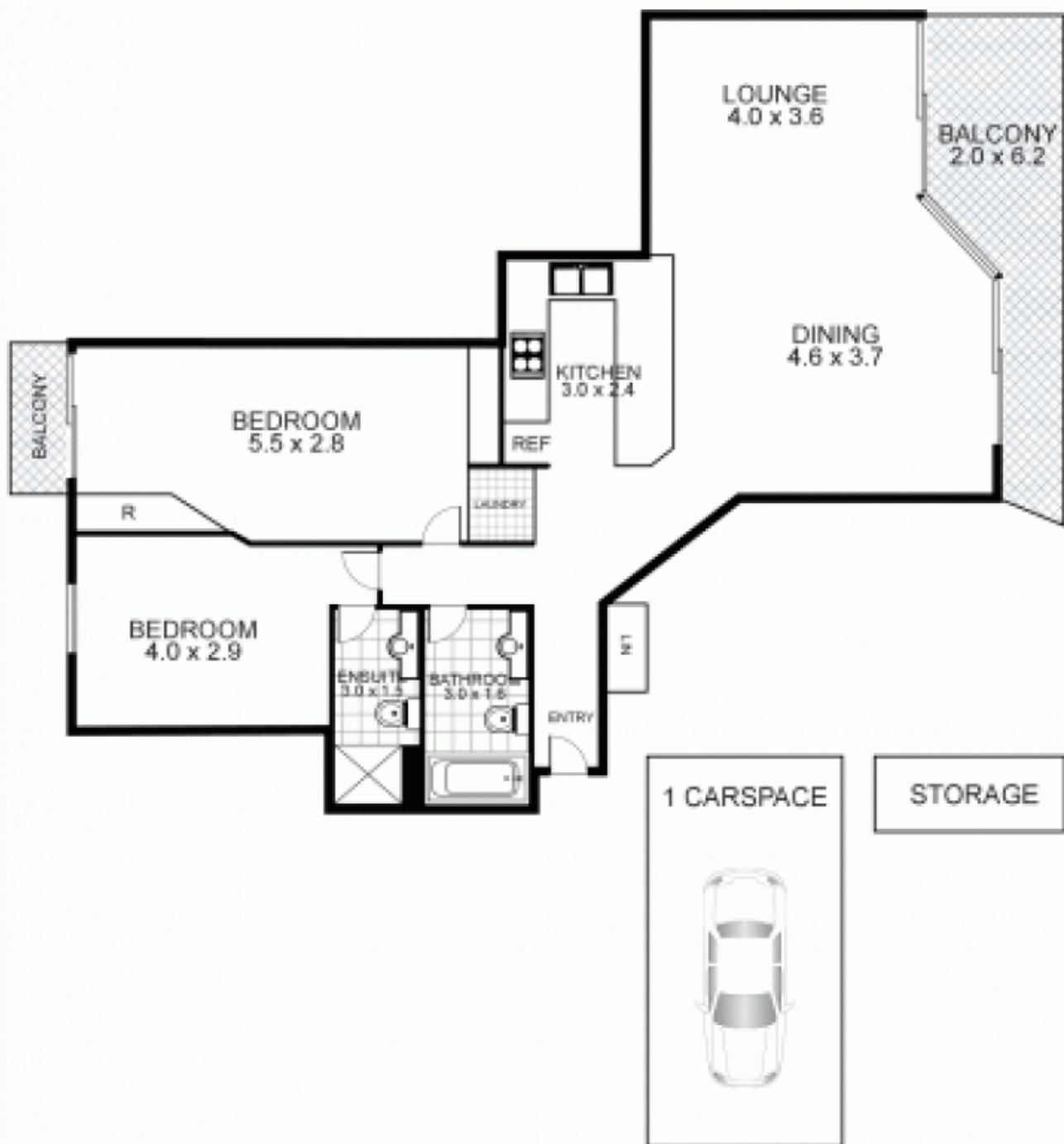
**Morton RE**



 [rentals@morton.com.au](mailto:rentals@morton.com.au)

[morton.com.au](http://morton.com.au)

# D903/24-26 Point Street, PYRMONT



This floor plan is intended as a guide only. Layout dimensions are approximate only. No representation or warranties of any nature whatsoever are given or intended. Any person using this information should rely on their own enquiries.

