



**morton.**

**ZETLAND** 315/17 Joynton Avenue

 1  1

\*\*\*Inspection times are available. To be notified of the inspection times via email or SMS (free of charge), simply submit an enquiry here with your contact details. Alternatively please search for the listing on our website <http://www.mortonandmorton.com.au/11205353> to book your own inspection online.\*\*\*

Wonderfully positioned in the bustling new precinct in Victoria Park, the famous 'Emerald Park' apartments provide a new level of living. This amazingly stylish one bedroom apartment offers split-level layout with spacious lounge downstairs and sun-drenched bedroom upstairs. The open plan living and dining areas flow out onto an oversized balcony with views. The unit features contemporary design and quality features.

- Integrated modern kitchen with stainless steel appliances
- Dishwasher, oven and gas cooking
- Built-in wardrobe in the bedroom
- Luxury bathroom with floor to ceiling tiles
- Polyurethane finish joinery with ample storage

**morton.com.au**

**View**

As advertised or by appointment

**Agent**

**Sarah Fowell**

 0437 492 129

 [sarah@morton.com.au](mailto:sarah@morton.com.au)

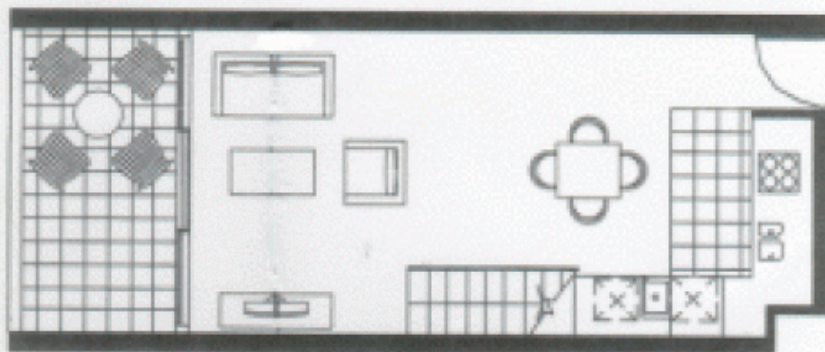


Unit Number 3.15  
 1 Bedroom + Study Loft

Strata Area 68  
 Internal Area 60  
 External Area 8



Upper Level



Lower Level

13 Joynton Avenue, ZETLAND



Eton

