



morton.

PYRMONT 6/9 Quarry Master Drive

2 2 1

** Please register for our inspections to be kept up to date with the property status. All available inspection times are automatically emailed to you by completing the online inquiry form, or "Book Inspection" directly at www.mortonandmorton.com.au/11066583

Over two levels, this unique two bedroom apartment offers comfort and tranquillity in a central and exclusive neighbourhood. With an oversized living area, two bedrooms, two bathrooms and lock up garage, this apartment is the perfect choice for those looking to live among the cafes, bars, shops and parks of Pyrmont.

- Open plan living, kitchen and dining area
- Italian marble tiled kitchen benchtop, Smeg appliances
- Recently painted and carpeted
- Balconies from the living and master bedroom
- Large master bedroom, ensuite, generous walk-in wardrobe
- Spacious second bedroom and main bathroom with bath
- Plantation shutters and flyscreens

morton.com.au

View

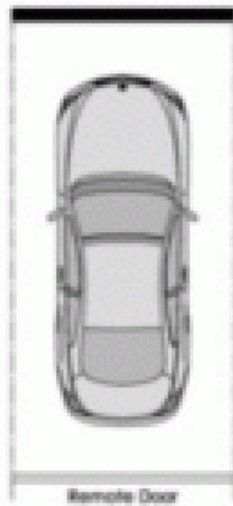
As advertised or by appointment

Agent

Morton RE

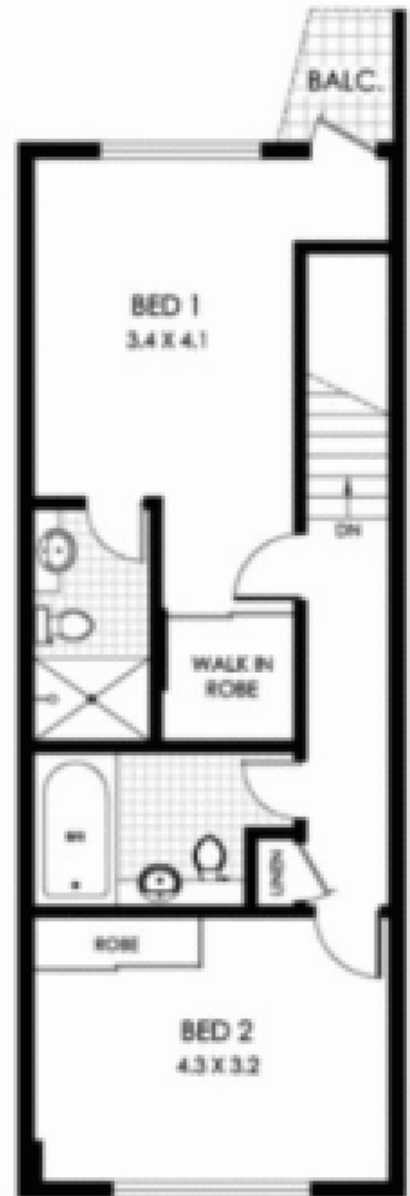


rentals@morton.com.au

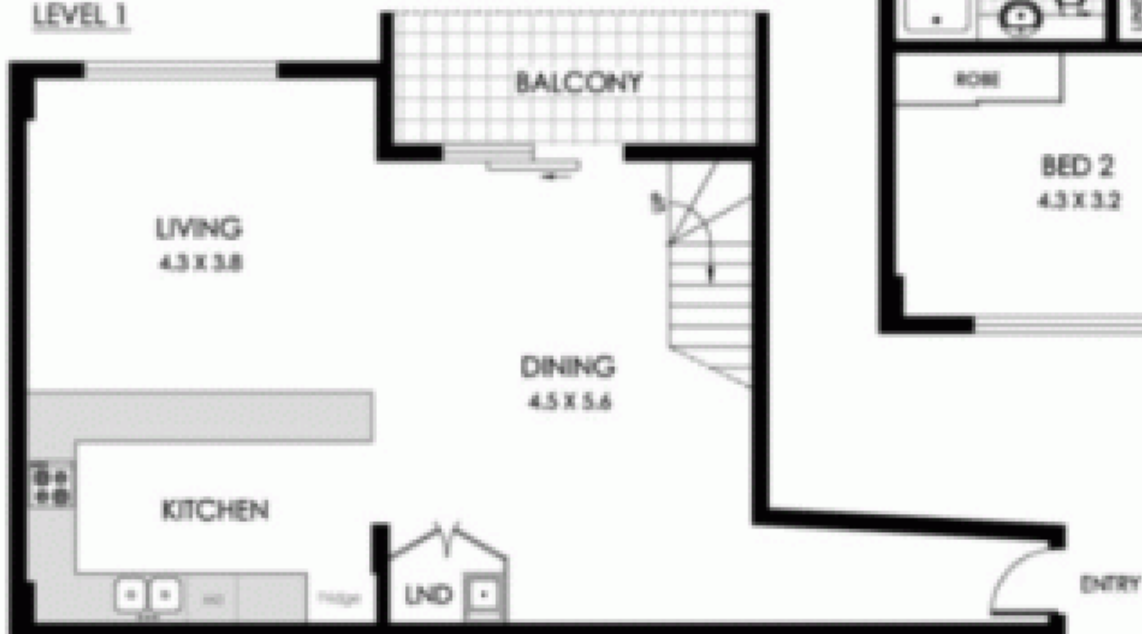


**GARAGE IN
BASEMENT
SECURITY**

LEVEL 2



LEVEL 1



0 1 2 3 SCALE (METRES)

PLANS SHOWN ARE ONLY INDICATIVE OF LAYOUT. DIMENSIONS ARE APPROXIMATE

All information contained herein is gathered from sources we believe to be reliable, however we cannot guarantee its accuracy and interested persons should rely on their own enquiries. Dimensions are approximate.



6/9 QUARRY MASTER DRIVE

PYRMONT

Apartment Size: 113m²