



**morton.**

**PYRMONT** 10 Wharf Crescent

 3  2  2

\*\*\*Inspection times are available. To be notified of the inspection times via email or SMS (free of charge), simply submit an enquiry here with your contact details. Alternatively please search for the listing on our website <http://www.mortonandmorton.com.au/9500133> to book your own inspection online.\*\*\*

**View**

As advertised or by appointment

**Agent**

**Morton RE**

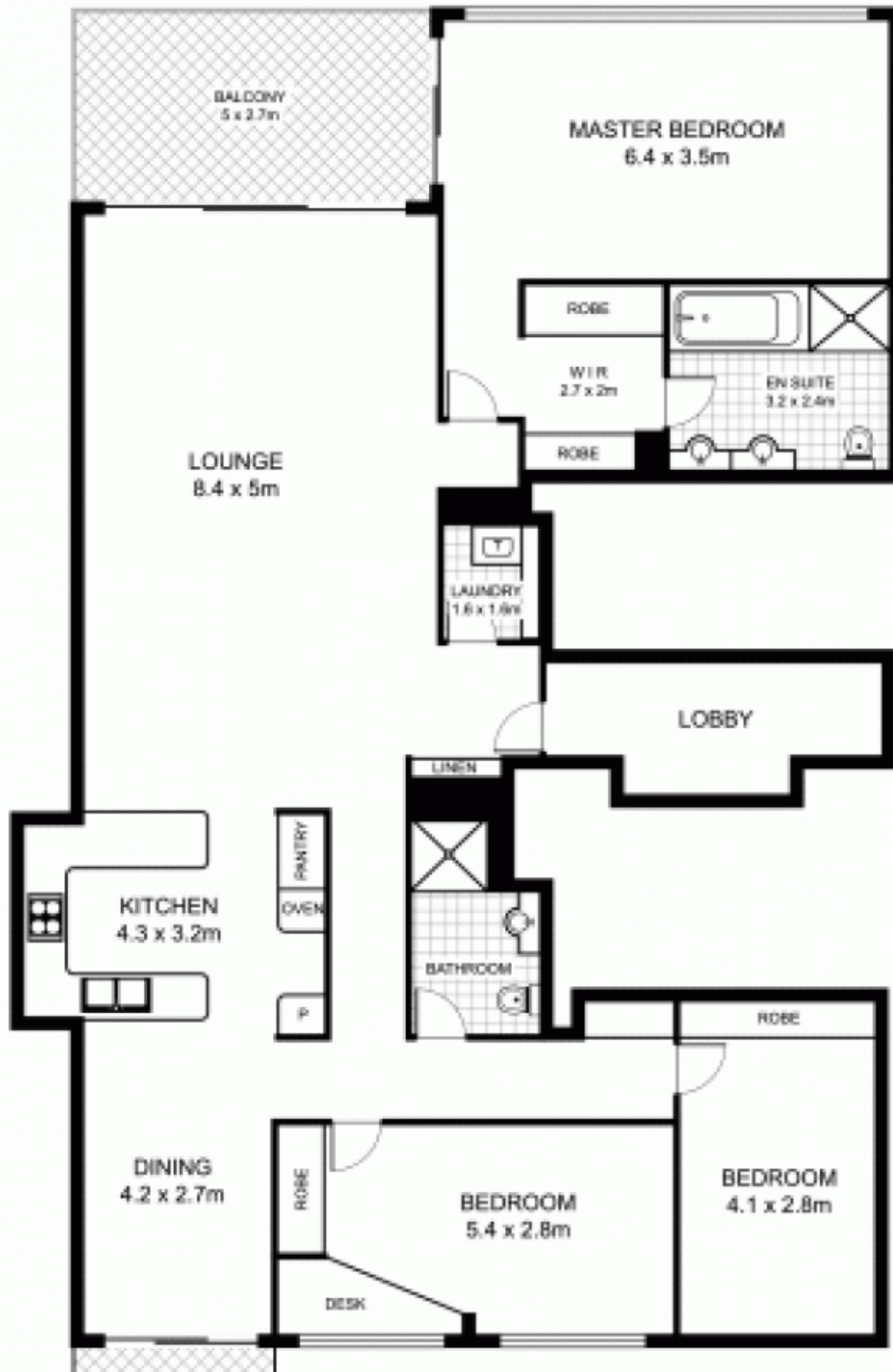
 [rentals@morton.com.au](tel:)  
 [rentals@morton.com.au](mailto:rentals@morton.com.au)

Located on Darling Island's harbourside peninsula this sublime apartment, in an exclusive boutique building, will suit those seeking space, privacy and exceptional standards. Positioned on the water's edge and spanning an entire level, this apartment makes the most of the expansive views over Sydney Harbour, the bridge, city and parkland.

- Large open plan lounge and dining
- Soaring ceilings opens to generous balcony
- Balcony with auto shade sail
- Beautifully appointed integrated kitchen with stone benchtops
- Miele stainless steel appliances

**morton.com.au**

# 305/10 Wharf Crescent, PYRMONT



**NORTH**

Plans by  
**surroundpix**  
com.au  
1300 30 32 40

This floor plan is intended as a guide only. Layout dimensions are approximate only. No representations or warranties of any nature whatsoever are given or intended. Any person using this information should rely on their own enquiries.