



morton.

LITTLE BAY 8/8 Curie Avenue

 2  2  1

Inspection times are available. To be notified of the inspection times via email or SMS (free of charge), simply submit an enquiry here with your contact details. Alternatively please search for the listing on our website <http://www.mortonandmorton.com.au/9371803> to book your own inspection online.

View

As advertised or by appointment

Agent

Sandy Shen

 0410 593 246

 rentals@morton.com.au

Located just 20 minutes from the Sydney CBD and just two minutes walk from Little Bay Beach, East Village comprises a unique collection of superbly restored landmark heritage buildings. This two bedroom single storey apartment featuring high ceilings, grand windows, and huge entertaining spaces.

- Open plan living, dining and kitchen area
- Quality polished timber floorboards
- Soaring four metre high ceilings and original features
- Grand windows maximise light and airflow
- Huge colonnaded private outdoor entertaining areas
- Appliances including washer/dryer, refrigerator and dishwasher

morton.com.au

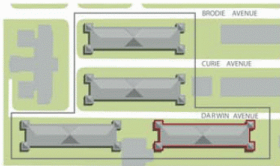
EAST VILLAGE

Two Bedroom Type 1

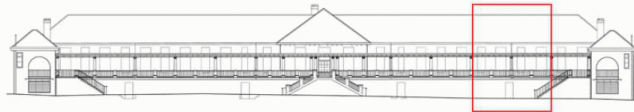


**EAST VILLAGE
APARTMENT C03
6-16 DARWIN AVENUE
PRINCE HENRY AT LITTLE BAY**

Bedrooms	2
Bathrooms	2
Carspaces	1
Internal Area	80m ²
External Area	65m ²
Storage Cage	19m ²
Total	164m ²



East Elevation



Disclaimer: Whilst the information on this panel has been carefully compiled and is correct at the time of publication (April 2011), the information and illustrations are indicative only and may be subject to change. Brookfield Residential Properties, companies related to it and its agents do not warrant the accuracy of the information or illustrations and do not accept any liability for any error or discrepancy in that information. Interested parties should undertake independent inquiries and investigations to satisfy themselves that any details herein are true and correct. The information and illustrations displayed on this panel will not form part of any contract of sale.