



morton.

PYRMONT 34/ 1* Murray Street

 3  2  2

APPLICATION RECEIVED

Located within a stroll across the Darling Harbour footbridge to the city this spacious furnished apartment, set out over one level, will appeal to those seeking the ultimate convenience to the city centre in an exceptionally presented contemporary setting.

- Open plan lounge and separate dining with high ceilings
- Deep private balcony ideal for entertaining with water and city glimpses
- Superb kitchen with breakfast area and shelving
- Ample granite bench space and Miele stainless steel appliances
- King sized master with ensuite and his and her built-in wardrobes
- 2nd and 3rd bedrooms with built-ins overlooking rainforest atrium
- Ducted air-conditioning, exterior privacy sliding screens
- Secure undercover tandem parking

morton.com.au

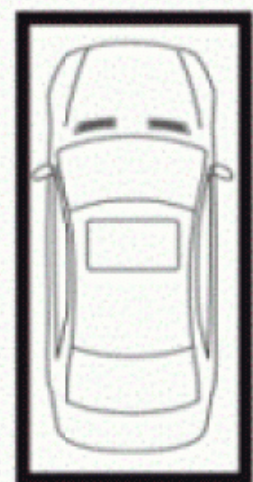
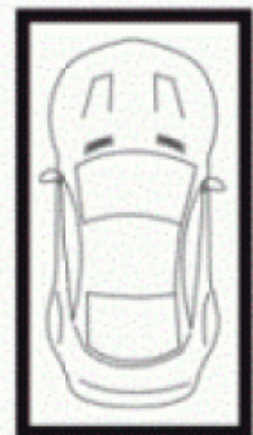
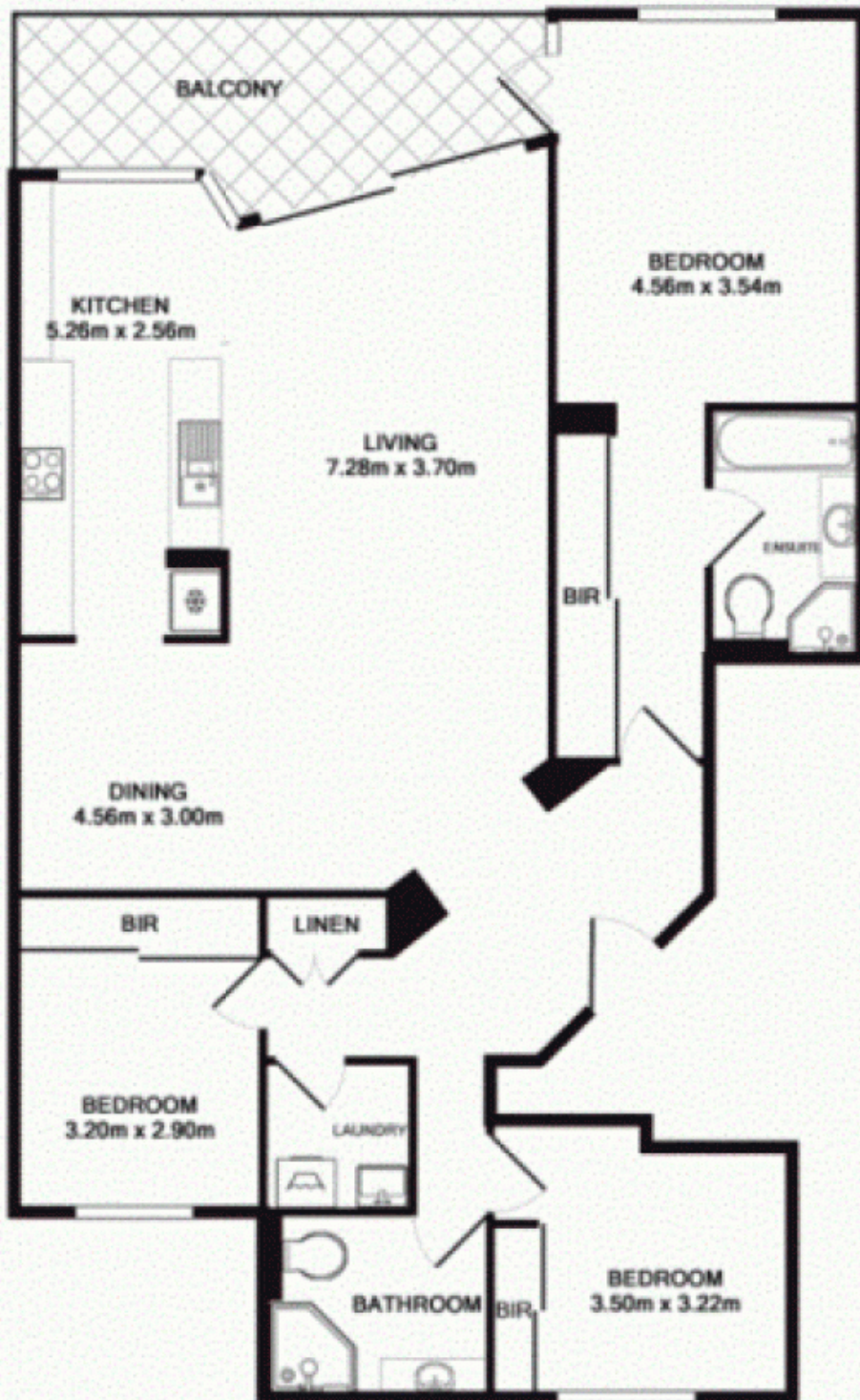
View

As advertised or by appointment

Agent

Morton RE

  rentals@morton.com.au



SECURE CAR SPACES
APPROX. FLOOR
AREA 30.0 SQ.M.



APARTMENT
APPROX. FLOOR
AREA 138.0 SQ.M.

TOTAL APPROX. FLOOR AREA 168.0 SQ.M.
Measurements are approximate. Not to Scale. For illustrative purposes only.
Produced by Open2View.com.au