



morton.

PYRMONT PYRMONT

 3  2  2

DEPOSIT TAKEN

This spacious Jacksons Landing terrace would suit a family or professional couple. Over three levels, it is in a central location close to transport and the CBD yet enjoying peaceful surroundings.

- Private terrace and internal courtyard
- Beautiful polished hardwood floors
- Three spacious bedrooms with built-in wardrobes
- Family room next to kitchen
- Full reverse cycle air conditioning throughout
- C-Bus lighting system
- Secure double garage, remote controlled with storage
- Including access to pool, gym and Jackson's Landing facilities and social club

View

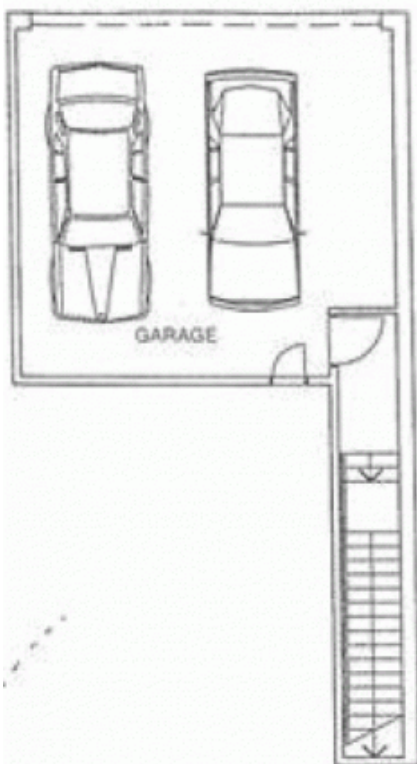
As advertised or by appointment

Agent

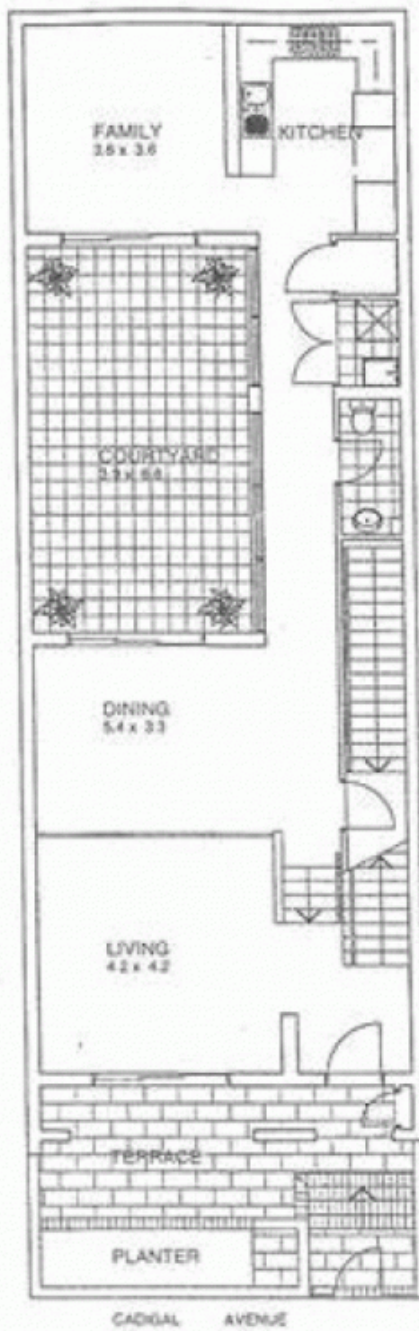
Morton RE

  rentals@morton.com.au

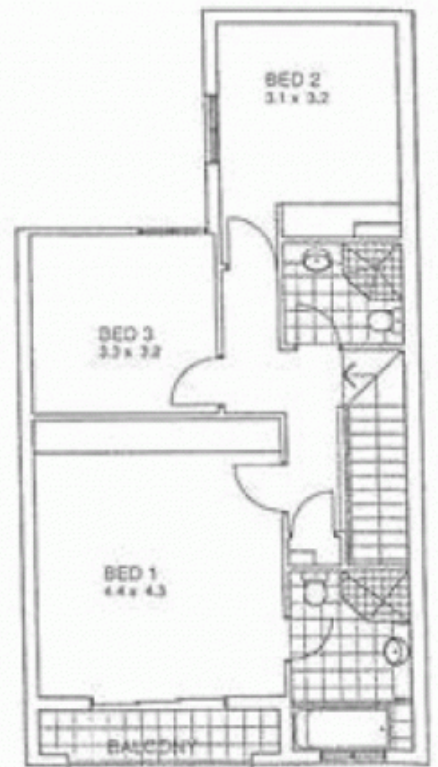
morton.com.au



LEVEL 01



LEVEL 02



LEVEL 03