



morton.

CHISWICK 8 Riverview Street

 4  3  2

Located on the Chiswick peninsula this stunning family home offers a peaceful retreat, water views and an abundance of space and luxury.

- Entry level with generous open plan living, dining and kitchen
- Wide doors opening to North facing terrace and 14m lap pool
- Entertainers basement with bar, games room and wine cellar
- Stainless steel kitchen appliances and benchtops
- Master bedroom with ensuite, balcony and views of the water
- Additional bedrooms with built in robes and fans
- Air conditioning
- Double garage

View

As advertised or by appointment

Agent

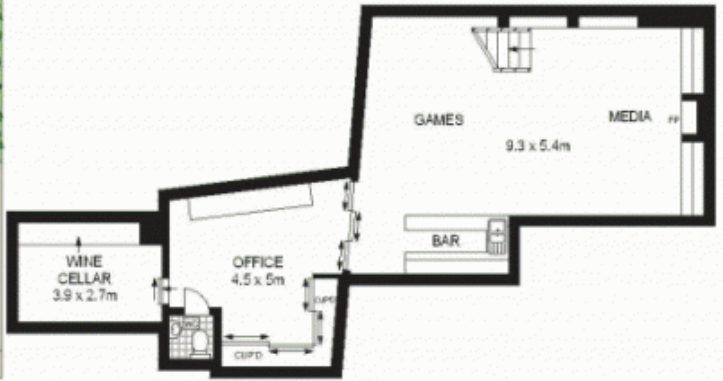
Morton RE

 [rentals@morton.com.au](tel:)

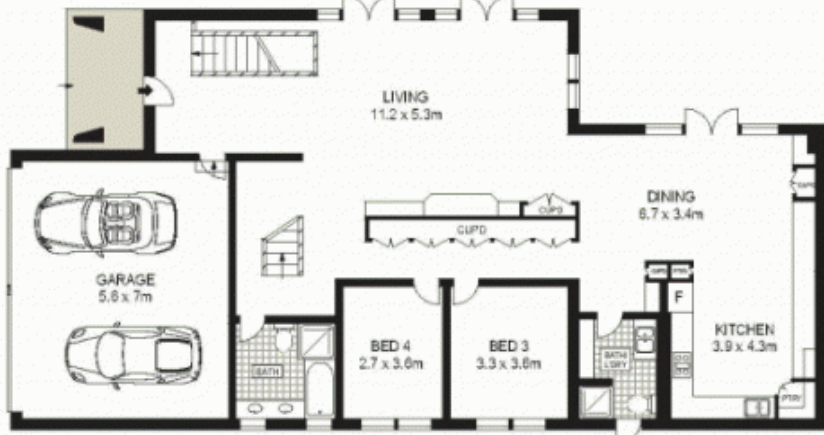
morton.com.au



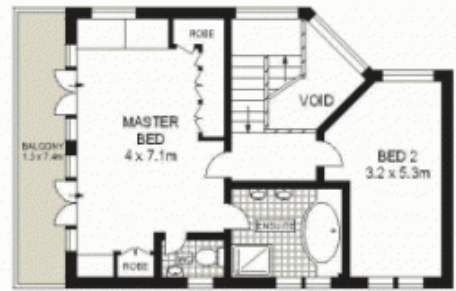
SITE PLAN (NOT TO SCALE)



LOWER LEVEL



GROUND LEVEL



LEVEL ONE



Scale in metres. Indicative only. Dimensions are approximate. All information contained herein is gathered from sources we believe to be reliable. However we cannot guarantee its accuracy and interested persons should rely on their own enquiries.

