



morton.

PYRMONT 404/6 Mount Street Walk

🛏 3 🚗 2 🚗 2

The intimate complex has just 13 unique residences. This tasteful warehouse conversion offers a unique three bedroom apartment with original iron-bark timber beams, sandstone window sills and metre thick walls, enhanced by loft bedrooms and mezzanine interiors.

- Luxury three bedroom warehouse conversion living
- Split level penthouse position with water views
- High ceilings with timber roofing
- Cast iron columns, hardwood beams and cast iron windows
- Open plan living with three balconies
- Gourmet stainless steel kitchen with granite and timber finishes
- Two bathrooms with high quality finish
- Three large bedrooms all with built-in wardrobes
- Two side by side underground and accessible secure car spaces
- Large storage 6sqm facility
- Resort style facilities, pool, gym, tennis courts and function hall

View

As advertised or by appointment

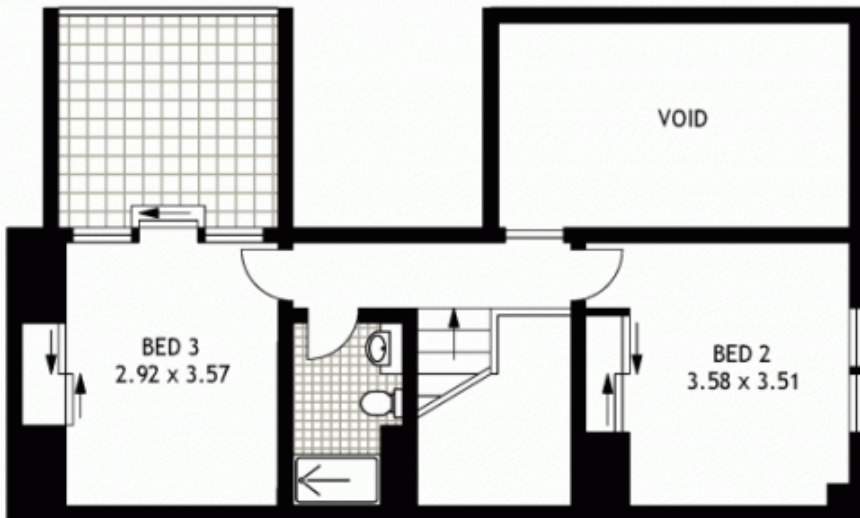
Agent

Morton RE

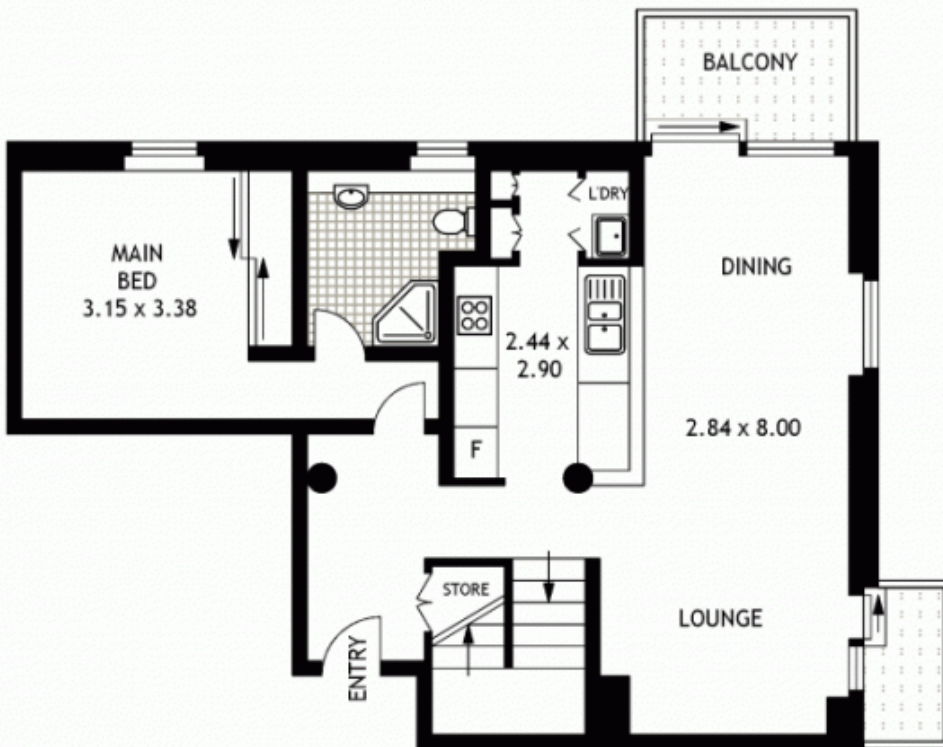


rentals@morton.com.au

morton.com.au



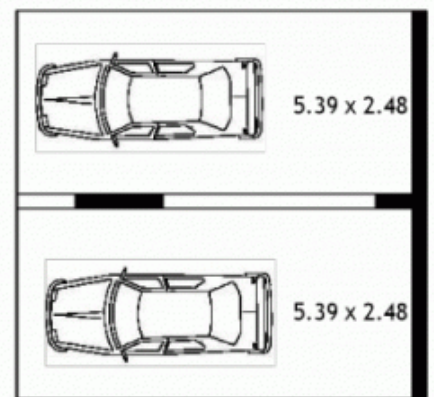
LEVEL FIVE



LEVEL FOUR



BASEMENT 1



BASEMENT



404/6 MOUNT STREET WALK

PYRMONT

SCAPE Floor Planing Disclaimer: This floor plan is conceptual only. It is provided for illustrative purposes only and should not be relied upon. We make no guarantees to the correctness of this plan. All interested parties should make and rely on their own enquiries in determining the accuracy of the information contained in this floor plan.