



# morton.

**Pyrmont** 204/15 Pirrama Road

 3  2  2

Surrounded by harbourfront parkland, tree lined streets and the historic Jones Bay Wharf this contemporary residence in a tranquil setting is only a short stroll to the city centre. Set metres from the harbour's edge, the exceptional design and finish makes this apartment stand out above the rest with an abundance of natural light illuminating the large open plan living and dining areas.

- Desirable northern aspect with harbour backdrop
- Opulent kitchen and informal breakfast area with morning sun
- Integrated finishes; stone benchtops and Miele appliances
- All rooms lead to the deep and private balcony
- Master bedroom with walk through robes and ensuite
- Additional full sized bathroom finished in marble
- Dual side by side secure parking plus easily accessed storage
- Resort style facilities; 20m lap pool, spa, sauna and gym

### View

As advertised or by appointment

### Agent

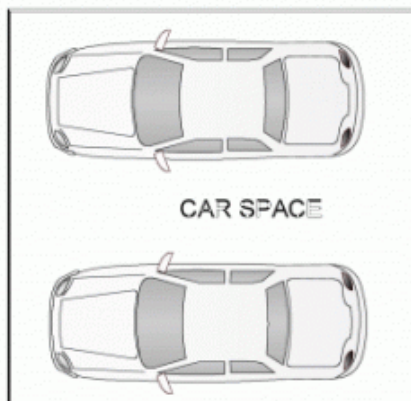
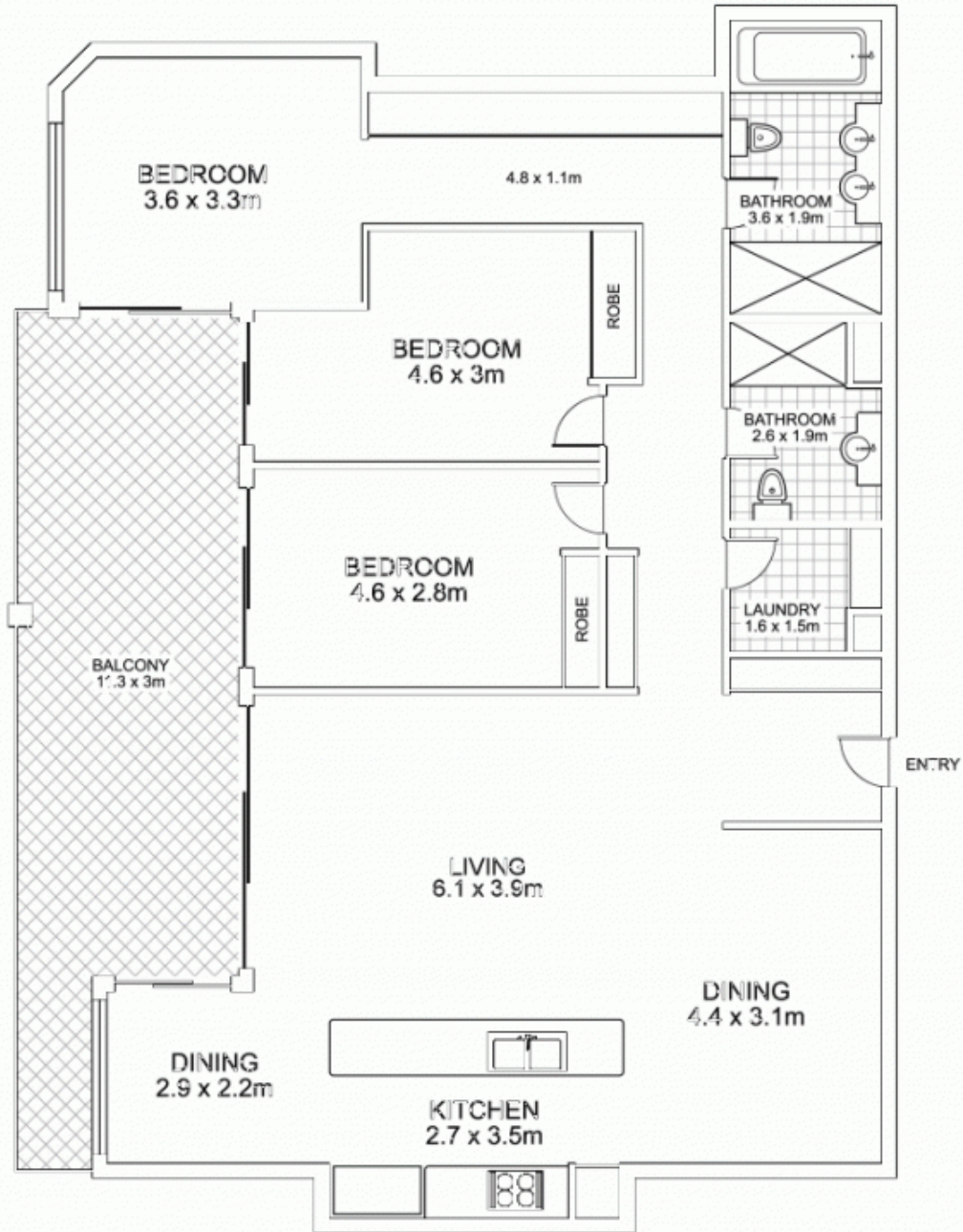
**Morton RE**



 rentals@morton.com.au

[morton.com.au](http://morton.com.au)

204/15 Pirrama Road,  
PYRMONT



Plans by  
**surroundpix**  
com.au  
1300 30 32 40

This floor plan is intended as a guide only. Layout dimensions are approximate only. No representations or warranties of any nature whatsoever are given or intended. Any person using this information should rely on their own enquiries