



morton.

PYRMONT 10 Wharf Crescent

 3  2  2

Located on Darling Island's harbourside peninsula this sublime apartment, in an exclusive boutique building, will suit those seeking space, privacy and exceptional standards. Positioned on the water's edge and spanning an entire level, this apartment makes the most of the expansive views over Sydney Harbour, the bridge, city and parkland.

- Large open plan lounge and dining
- Soaring ceilings opens to generous balcony
- Balcony with auto shade sail
- Beautifully appointed integrated kitchen with stone benchtops
- Miele stainless steel appliances
- Sundrenched informal dining
- Enormous master bedroom overlooking the harbour and city
- Master with walk through robes and superbly finished ensuite
- Oversized second and third bedrooms with built-ins
- Bedrooms adjacent to additional designer bathroom

View

As advertised or by appointment

Agent

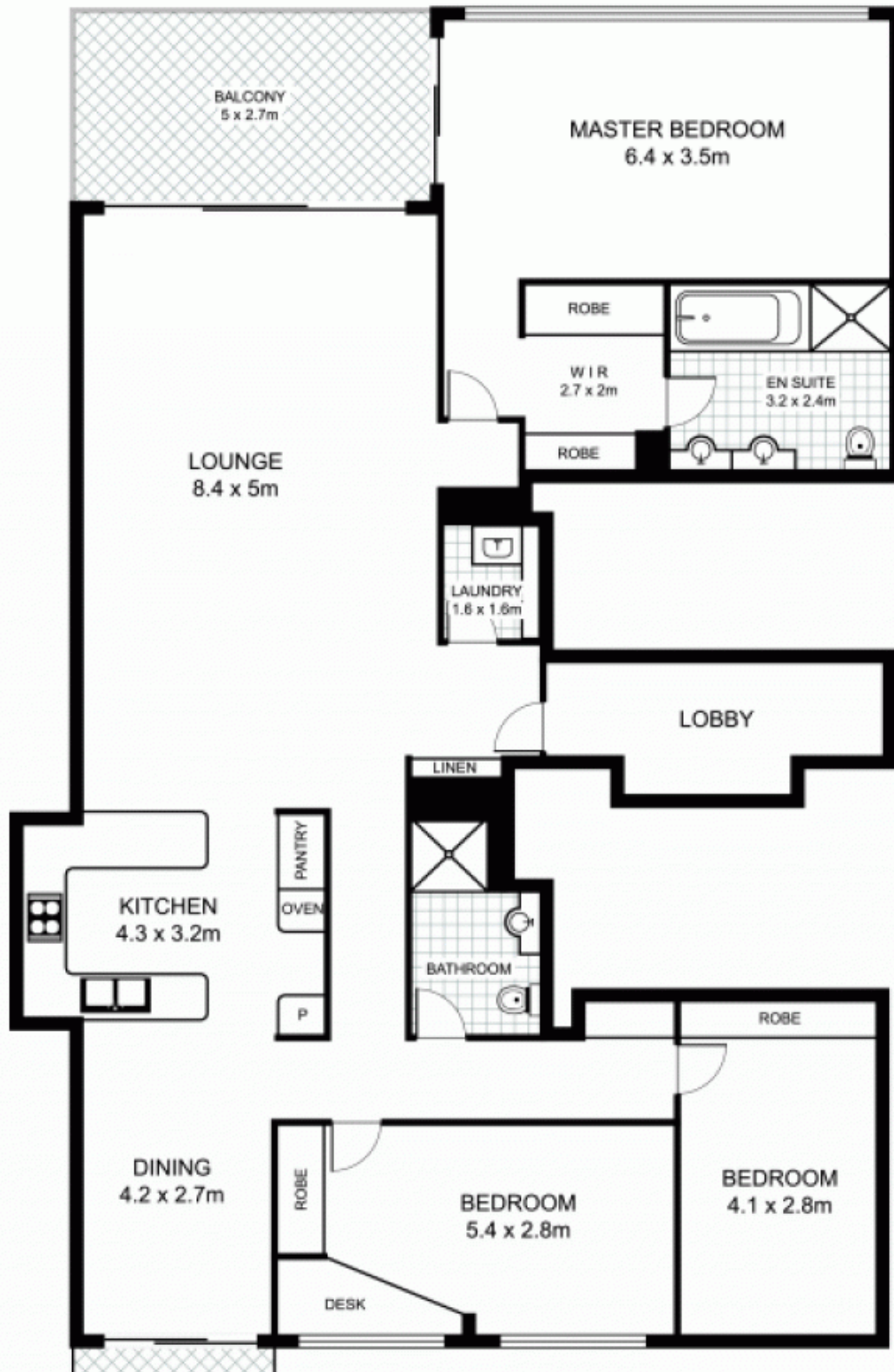
Morton RE



 rentals@morton.com.au

morton.com.au

305/10 Wharf Crescent, PYRMONT



NORTH

Plans by
surroundpix
com.au
1300 30 32 40

This floor plan is intended as a guide only. Layout dimensions are approximate only. No representations or warranties of any nature whatsoever are given or intended. Any person using this information should rely on their own enquiries