



morton.

GLEBE 6/94 Forsyth Street

 2  2  1

Prestigiously positioned in what is undoubtedly one of Sydney's premier waterfront enclaves, this exceptional lifestyle residence exudes quality throughout. With breathtaking views of Blackwattle Bay and the Anzac Bridge, this is the ultimate in city living only moments from Glebe's cafe culture, restaurants and other amenities.

- Perfectly located in luxurious waterfront development
- Two double bedrooms with built-ins
- Integrated Smeg, gas kitchen with Caesarstone benchtops
- Open plan living/dining opens to entertainers' balcony
- Modern bathroom and ensuite, internal laundry
- Ducted reverse-cycle air conditioning
- Secure under cover parking with large caged storage area
- Walk to city or catch the light rail from this ideal location
- Moments to parks, shops, transport and schools
- Desired north aspect - a must see

View

As advertised or by appointment

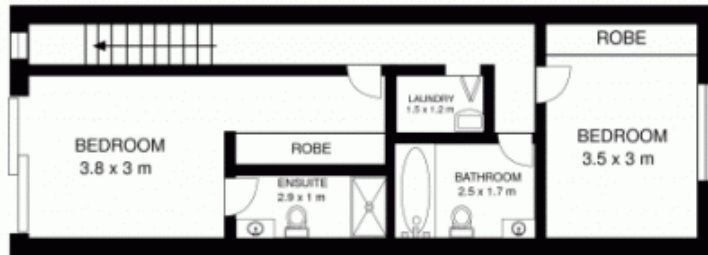
Agent

Morton RE

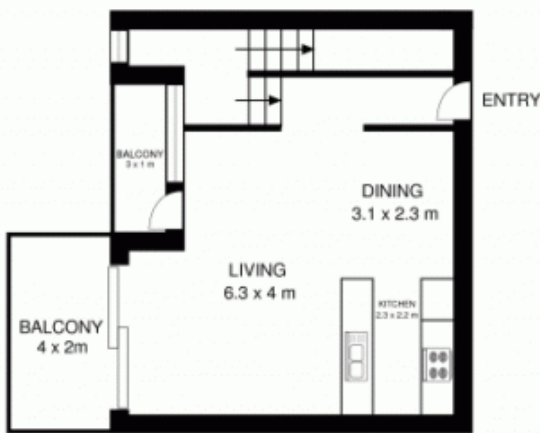
  rentals@morton.com.au

morton.com.au

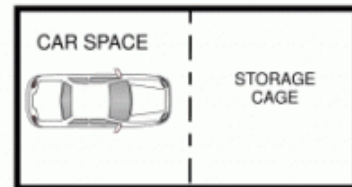
6/94 Forsyth Street,
GLEBE



FIRST FLOOR

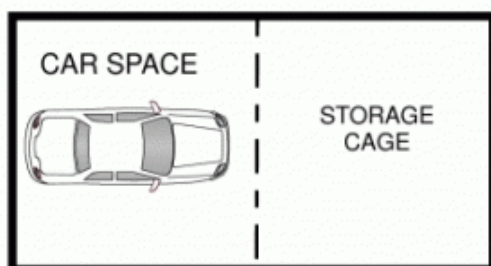
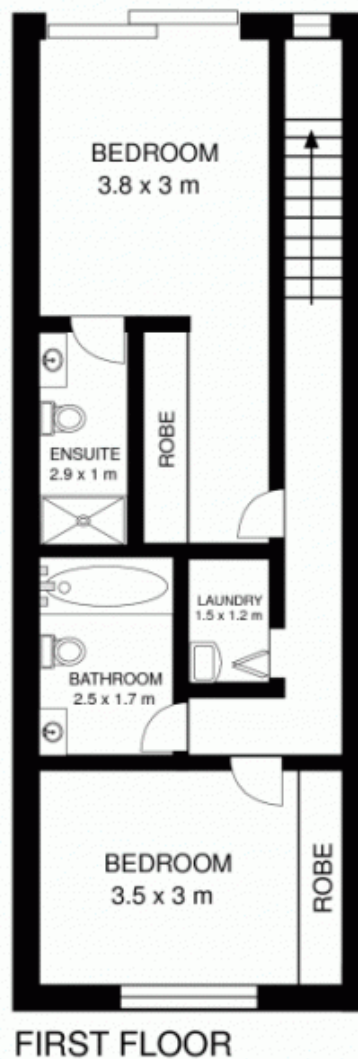
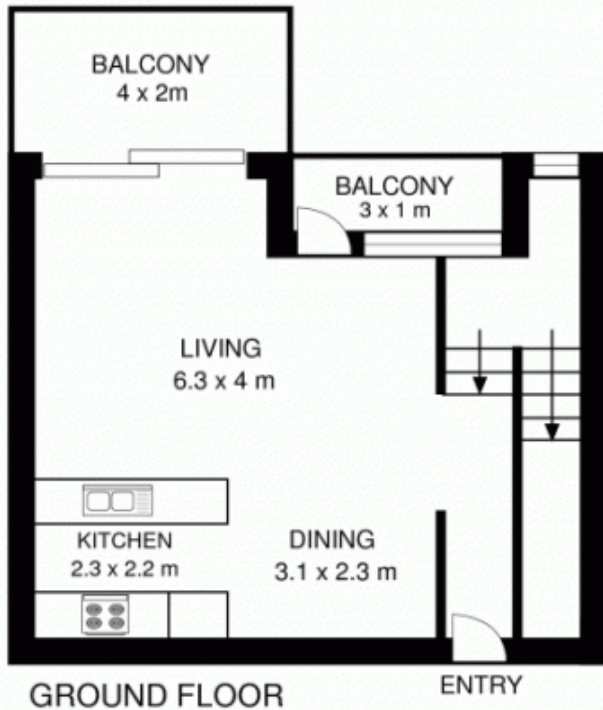


GROUND FLOOR



This floor plan is intended as a guide only. Layout dimensions are approximate only. No representation or warranties of any nature whatsoever are given or intended. Any person using this information should rely on their own enquiries.

6/94 Forsyth Street, GLEBE



This floor plan is intended as a guide only. layout dimension are approximate only. No representation or warranties of any nature whatsoever are given or intended. Any person using this information should rely on their own enquiries.