



morton.

PYRMONT PYRMONT

 2  2  2

APPLICATION RECEIVED

This is a unique opportunity to occupy a designer apartment in a waterfront luxury location. Tightly held and highly sought after this over sized floor plan represents the ultimate harbour hideaway within a short stroll to the city centre.

- Tranquil water and private marina views
- Open plan lounge and dining area, 2.7 metre ceilings
- Blackbutt timber floors
- Enormous timber decked balcony off living
- Miele /marble kitchen
- King size master bedroom with walk-in wardrobes
- Travertine ensuite with separate shower and bathtub
- Completely separate second bedroom with built-ins and balcony
- Ample amount of internal storage
- Internal laundry with washer/dryer
- Ducted air-conditioning
- Concierge, secure side by side parking plus storage cage

View

As advertised or by appointment

Agent

Morton

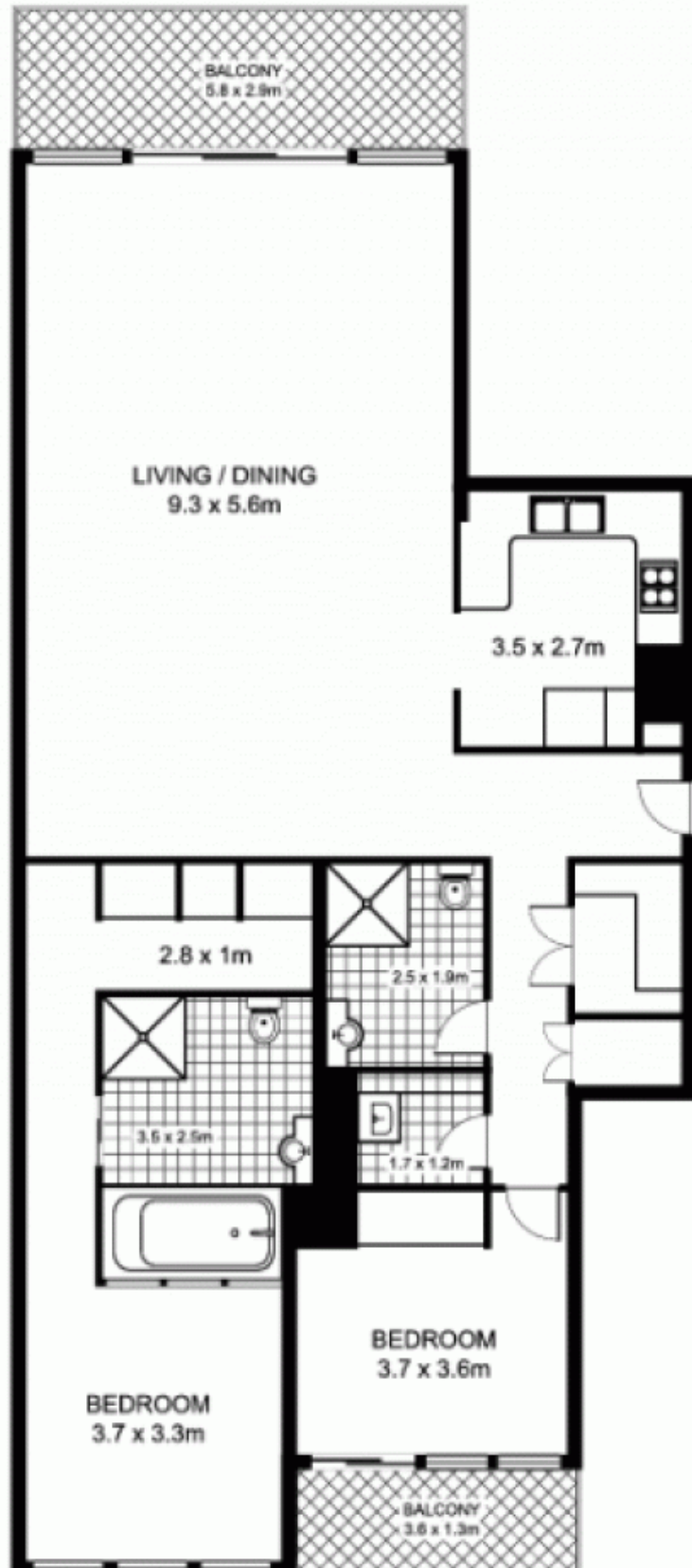
 [02 9550 0000](tel:0295500000)
 info@morton.com.au

morton.com.au

SYDNEY WHARF PYRMONT

SCALE 

- This floor plan is intended as a guide only
- Layout dimensions are approximate only
- No representations or warranties of any nature whatsoever are given or intended
- Any person using this information should rely on their own enquiries



SYDNEY WHARF PYRMONT

SCALE 

- This floor plan is intended as a guide only
- Layout dimensions are approximate only
- No representations or warranties of any nature whatsoever are given or intended
- Any person using this information should rely on their own enquiries

