



morton.

North Sydney 615/225-235 Pacific Highway



With respect to the government's restrictions around open homes and to help stop the spread of COVID-19, our properties can be viewed by appointment only. Please contact the listing agent for more information.

VIDEO INSPECTION: <https://youtu.be/BxREcNqfE6U>

A exceptional lifestyle haven of contemporary style, space and convenience. Close to amenities and only a short stroll to the heart of North Sydney giving access to a range of café, dining, shops, Mater hospital and transport options, its timeless appeal is unquestionable.

- Spacious master with built-in wardrobes and balcony access
- Study area with fantastic storage options
- Modern kitchen with european appliances including dishwasher
- Entertainers balcony with views
- Reverse cycle air-conditioning and NBN ready
- Internal laundry with dryer

morton.com.au

View

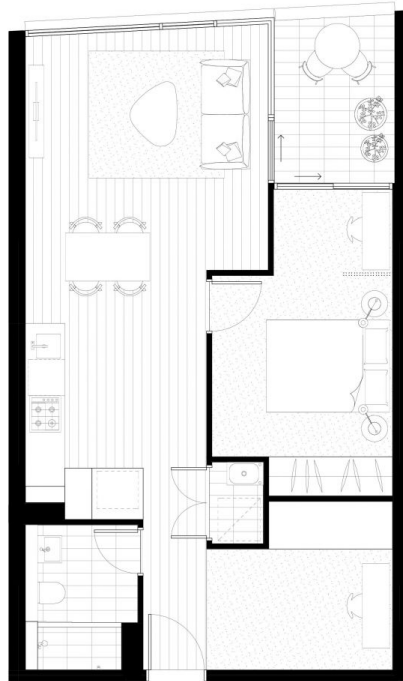
As advertised or by appointment

Agent

Sarah Fowell

📞 0437 492 129

✉️ sarah@morton.com.au



Disclaimer: The particulars are set out as a general outline for the guidance of intending purchasers and do not constitute an offer or contract. All descriptions, dimensions, references to conditions and necessary permutations for use and other details are given in good faith and are believed to be correct, but any intending purchaser should not rely on them as statements or representations of fact, but must satisfy themselves by inspection or otherwise to the contrary of each fact, and where necessary seek advice. No third party supplier or their agents has any authority to make or give any representations or warranty in relation to this property.

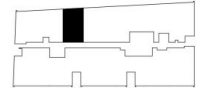
GREENLAND PRESENTS
LUCENT
NORTH SYDNEY

UNIT NUMBER
117, 217, 316, 515, 615



**ONE BEDROOM
+ STUDY
APARTMENT**

Internal Area 59m²
External Area 5m²
Total Area 64m²



1800 207 778
lucentnorthsydney.com.au

