



morton.

Lane Cove 105/390 Pacific Highway

 1  1  1

Located on the ground floor within the 'Lotus' complex, this 1 bedroom high end luxury apartment offers a lifestyle of convenience. Located just minutes from shops, restaurants and only a short stroll to city transport. Quality fittings and finishes throughout, this property offers quality and lifestyle in equal measures.

- Open plan living flowing out to the over-sized balcony
- Luxury kitchen with stone benchtops and smeg appliances
- Bedrooms with spacious built-ins
- Internal laundry with dryer, intercom
- Ducted reverse cycle air conditioning
- Access to secure car space and storage cage via Mafeking Avenue
- Visitor parking available within complex
- Communal rooftop area with panoramic city to mountain views
- Close to public transport to Sydney CBD and Lane Cove village living

View

As advertised or by appointment

Agent

Sarah Fowell

 0437 492 129

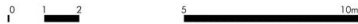
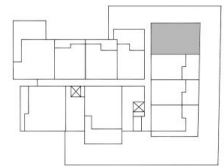
 sarah@morton.com.au

morton.com.au



APARTMENT 105 1 BEDROOM

INTERNAL	54 SQM
EXTERNAL	26 SQM
TOTAL	80 SQM



The information and images in this document are intended as an introduction to the general content of the project only and interested parties should rely on their own enquiries. Savills, its officers, employees, subcontractors, agents and related bodies corporate expressly disclaim any liability and responsibility (except to the extent that liability under statute or by operation of law cannot be excluded) to any person for any loss, liability, damage or expense arising directly or indirectly from or connected in any way with any use of or reliance on the information contained within this document. All computer generated images are artist impressions only and the final form of the project is subject to change. Branding and design by: www.brandandco.com.au

