



**morton.**

**Milsons Point** 507/88 Alfred Street

 2  1

Located in the newly developed 88 Alfred complex, this fully equipped home offers a cosmopolitan lifestyle in the heart of Milsons Point. Ideally situated just a short walk to Kirribilli Village, Milsons Point train station, Milsons Point wharf and ferry, North Sydney Olympic Pool, Luna Park, Wendy's Secret Garden, foreshore parklands and walkways, this impressive apartment is perfectly suited to a professional couple or single looking for style and convenience.

- Vast open plan layout enclosed by floor to ceiling, double-glazed glass
- Expansive Lavender Bay views and Harbour Bridge glimpses from living area and balcony
- Large gourmet kitchen with Miele gas appliances and sleek storage options
- Timber floors in living areas and carpet in the bedrooms
- Master suite features floor to ceiling built-in wardrobes, balcony access and water views
- Second bedroom features large built-in wardrobe and perfectly suited as a bedroom or home office

**morton.com.au**

**View**

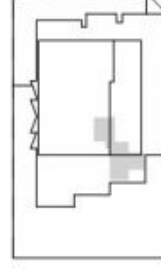
As advertised or by appointment

**Agent**

**Sarah Fowell**

 0437 492 129

 sarah@morton.com.au



**88 ALFRED ST**  
MILSONS POINT

1 BED + STUDY  
LEVELS 2, 3, 4, 5, 6, 7, 8, 9, 10, 11  
APARTMENT 02.08, 03.07, 04.07, 05.07, 06.07, 07.07,  
08.07, 09.07, 10.07, 11.07

INTERNAL:  
BALCONY:  
TOTAL:

59 m<sup>2</sup>  
5 m<sup>2</sup>  
64 m<sup>2</sup>

1800 898 818  
88AlfredSt.com.au



DISCLAIMER - Information and images in this brochure are preliminary and indicative only. Actual development layout, specification and construction may differ. Agreed specifications and our rights to vary those specifications will be set out in your contract for purchase. You should obtain independent professional advice on the contract before you proceed.