



morton.

Lane Cove 404/2 Waterview Drive

 2  2  1

Situated in the brand new 'Eva' boutique complex, this luxury two bedroom apartment features the highest quality features and offers a lifestyle of unrivalled sophistication. Conveniently situated near picturesque parklands, public transport, shops, and an array of schools this home instantly appeals to a couple or small family looking to upgrade.

- Open plan living flows effortlessly to generous entertainers balcony
- Premium oak floors, ducted reverse-cycle air conditioning and NBN
- Both bedrooms feature abundant built-in storage, Master flows to ensuite bathroom.
- Designer gas kitchen featuring stone bench-tops and Miele appliances
- Internal European style laundry with dryer, audio-visual intercom
- Secure parking with lift access in security building
- Stroll to Hughes park, Burns Bay foreshore and city and northern bus stops

View

As advertised or by appointment

Agent

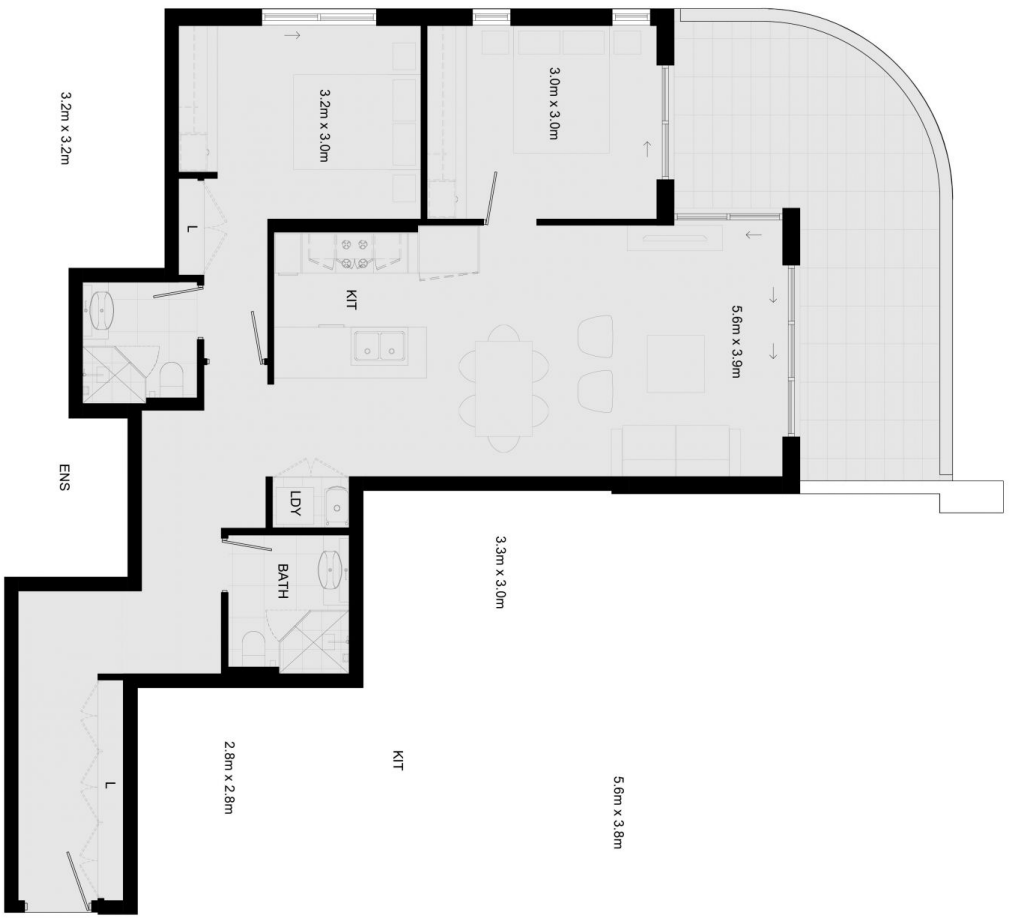
Sarah Fowell

 0437 492 129

 sarah@morton.com.au

[morton.com.au](https://www.morton.com.au)

3.04	4.04	5.04	6.04	7.04
Areas (m ²)		Internal 83	Balcony 20	Storage 02
		Parking 13	Total 118	



THIS FLOOR PLAN IS AN APPROXIMATE REPRESENTATION OF THE PROPOSED DEVELOPMENT. THE ACTUAL DEVELOPMENT MAY VARY FROM THIS REPRESENTATION. THE DEVELOPER ACCEPTS NO LIABILITY FOR ANY ERRORS OR OMISSIONS. THE DEVELOPER IS NOT RESPONSIBLE FOR ANY DAMAGE TO PERSONS OR PROPERTY CAUSED BY THE USE OF THIS FLOOR PLAN.