



morton.

Greenwich 2303/1-8 Nield Avenue

 1  1  1

This stunning apartment comes with a lifestyle to match. Smart, contemporary and luxurious, its over-sized interiors guarantee perfect comfort with their generous dimensions, high end finishes and thoughtful extras including a study nook. Only a few easy steps to express city bus services and within walking distance of the Royal North Shore Hospital, parklands and St Leonards rail and eatery district.

- Superb security building with multiple visitors parking
- Lift access from its secure parking and storage cage
- Generous open plan living and dining, study nook
- Superb stone island gas kitchen, Smeg appliances and dishwasher
- High ceilings, ducted air conditioning
- Spacious master bedroom with balcony access and robes
- Internal laundry with dryer
- Large entertaining balcony with north-easterly aspect

View

As advertised or by appointment

Agent

Sarah Fowell

 0437 492 129

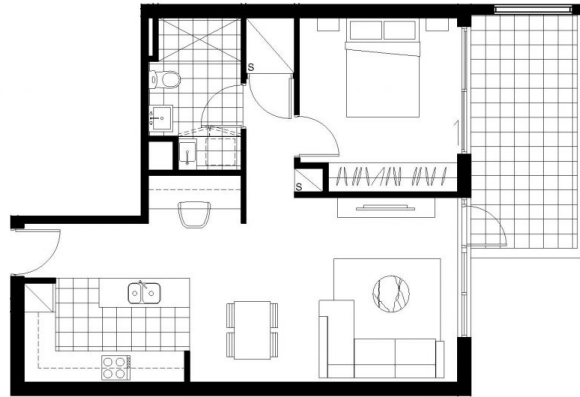
 sarah@morton.com.au

morton.com.au

1 Bedroom + Study

Internal area 55m²
External area 10m²

Total 65m²



APARTMENTS

- 1302
- 1402
- 1502
- 2303
- 2403
- 2503
- 3303
- 3403
- 3502



| | |
|-----------|-------|
| APARTMENT | _____ |
| PRICE | _____ |

auralia
GREENWICH

Please note that this floor plan was produced prior to DA approval and construction. The information herein is believed to be correct but is not guaranteed. Changes may be made during construction and dimensions, areas, fittings and specification are subject to change without notice in accordance with the provisions of the contract for sale. The furniture and furnishing should not be taken to be indicative of positions of power points, TV connection points and the like. Prospective purchasers must rely on their own enquiries. All graphics including tile layout, balustrades and like are indicative only. Bulkheads for services are not depicted. Floor plan is at an unspecified scale. All area sizes indicated are approximate only and are subject to final survey.

www.auraliagreenwich.com.au

8969 8500

CBRE