



morton.

North Sydney 1907/144-154 Pacific Highway

🛏 2 🚿 2 🚗 1

Holding deposit taken, future inspections cancelled.

The elegant Polaris Apartments sits on Pacific Highway and Berry Street, enjoying a much sought-after North Sydney address. Flawlessly finished with an exacting attention to detail, the interiors effortlessly balance contemporary elegance with unique crystalline form, specifically the need to provide each apartment with maximum sunlight.

- Located on level 19 occupying the north-east corner
- Full gourmet kitchen featuring Miele appliances including dishwasher, stone bench-tops and soft close cupboards
- Queen-sized bedrooms with full size built-in wardrobes and great natural light
- Two luxury bathrooms tiled floor to ceiling with stone bench tops and frame-less glass shower screen
- Large enclosable balcony with district skyline views and maximum sunlight
- Secure car space, lock up storage and internal laundry with dryer

morton.com.au

View

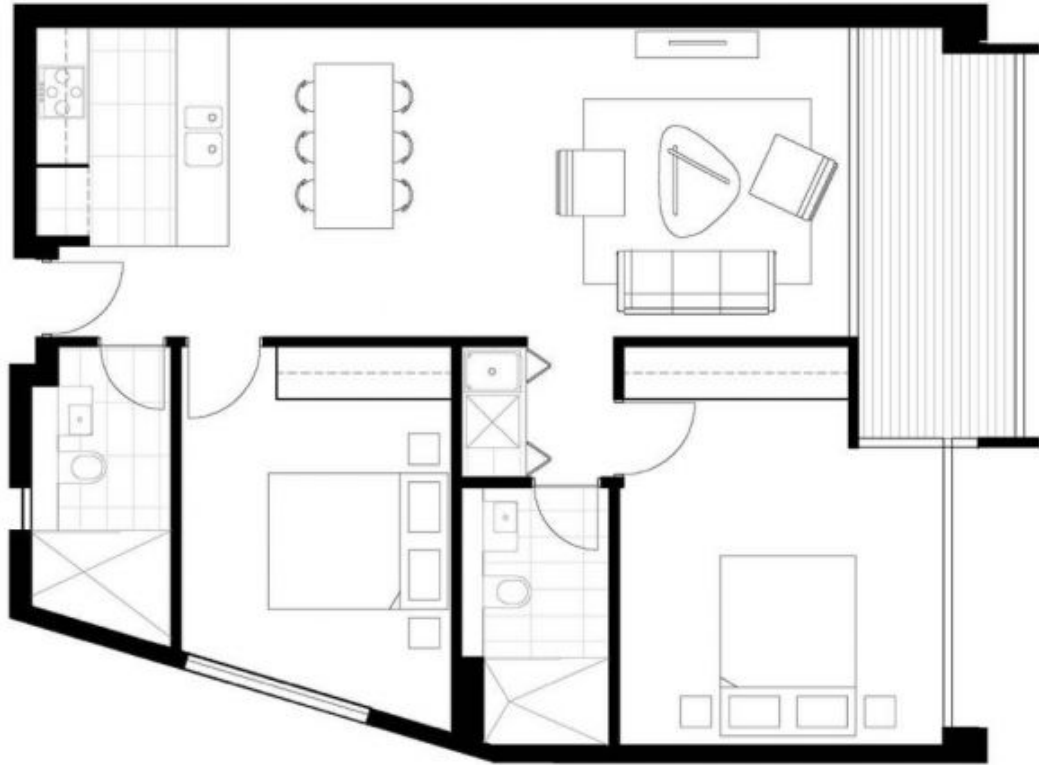
As advertised or by appointment

Agent

Sarah Fowell

📞 0437 492 129

✉ sarah@morton.com.au



1907/144-154 Pacific Highway, North Sydney NSW 2060

morton.

Disclaimer: This plan is a guide only and does not constitute an offer or contract. Please note changes may be made during the development and areas, fittings, fixtures and specifications are subject to change without notice in accordance with the terms of the contract of sale. All parties must rely on their own investigation to validate this information as it is not guaranteed. No liability will be accepted for any inaccuracy or misstatement.

