



morton.

North Sydney 1006/225-235 Pacific Highway

 1  1  1

LEASED

Holding deposit taken, all future inspections cancelled

A exceptional lifestyle haven of contemporary style, space and convenience. Close to amenities and only a short stroll to the heart of North Sydney giving access to a range of café, dining, shops, Mater hospital and transport options, its timeless appeal is unquestionable.

- Spacious master with built-in wardrobes and balcony access
- Study area with fantastic storage options
- Modern kitchen with european appliances including dishwasher
- Entertainers balcony with expansive waterviews
- Reverse cycle air-conditioning and NBN ready
- Internal laundry with dryer
- Secure parking for one vehicle and adjacent storage cage
- Concierge, rooftop gardens and infinity pool with panoramic harbour views
- Gym, communal rooftop BBQ and dining space alongside

morton.com.au

View

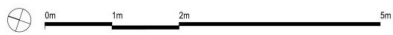
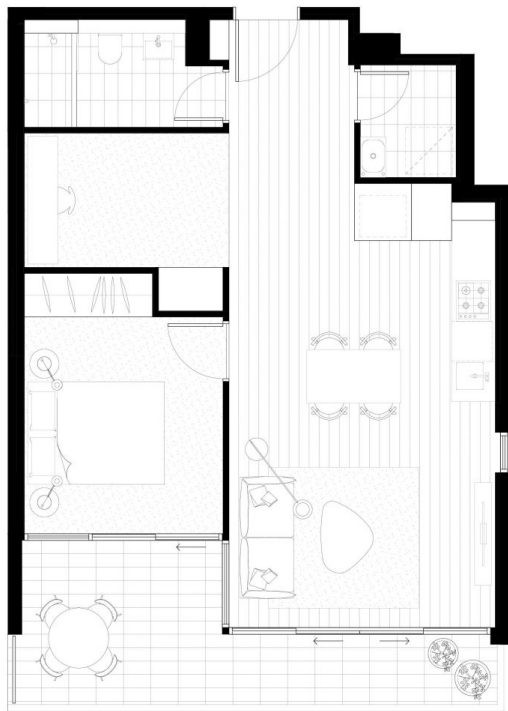
As advertised or by appointment

Agent

Sarah Fowell

 0437 492 129

 sarah@morton.com.au



Disclaimer: The particulars are set out as a general outline for the guidance of intending purchasers and do not constitute an offer or contract. All descriptions, dimensions, references to conditions and necessary permutations for use and other details are given in good faith and are believed to be correct, but any intending purchasers should not rely on them as statements or representations of fact, but must satisfy themselves by inspection or otherwise to the correctness of each item, and where necessary seek advice. No third party supplier or their agents has any authority to make or give any representations or warranty in relation to this property.

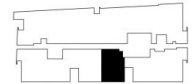
GREENLAND PRESENTS
LUCENT
 NORTH SYDNEY

UNIT NUMBER
 706, 806, 906, 1006, 1106,
 1206, 1306, 1506



**ONE BEDROOM
 + STUDY
 APARTMENT**

Internal Area 56m²
 External Area 12m²
 Total Area 68m²



1800 207 778
lucentnorthsydney.com.au

