



morton.

Wollstonecraft 13/25-27 Belmont Avenue

 3  2  1

Holding deposit taken, all future inspections cancelled.

On the first floor of boutique 'Somerfield', a secure modern complex in leafy surrounds, this north facing apartment is spacious, sunlit and ready to enjoy. Newly renovated interior offering a spacious layout and flow to a north covered balcony for indoor/outdoor living and entertaining.

- Generous layout and newly renovated to the highest standards
- Gas kitchen equipped with stainless steel appliances, stone bench-tops and abundant storage options
- Freshly painted with new floorboards through-out combined living and dining
- North-facing master suite with walk-through wardrobe to ensuite
- All bedrooms generously proportioned with built-in wardrobes and plantation shutters
- Tiled main bathroom with frameless glass shower recess and separate tub

morton.com.au

View

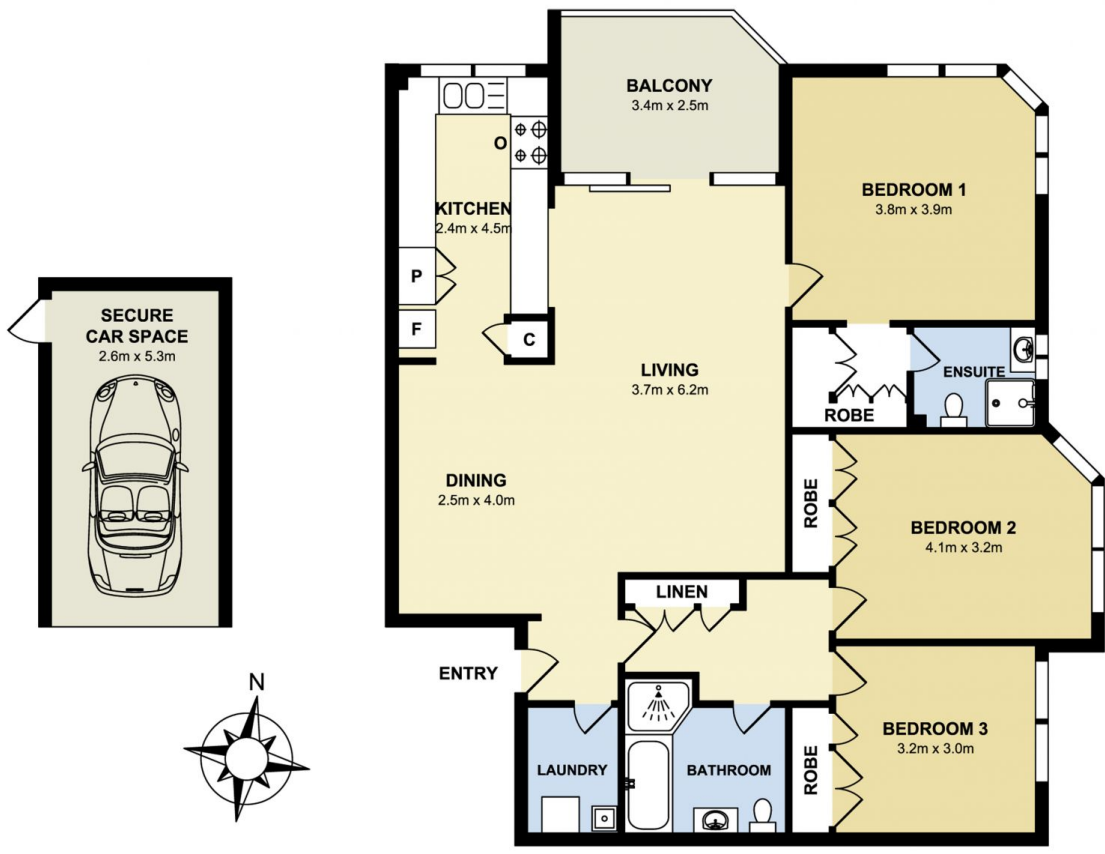
As advertised or by appointment

Agent

Morton



 info@morton.com.au



morton.

Wollstonecraft 13/25-27 Belmont Avenue